

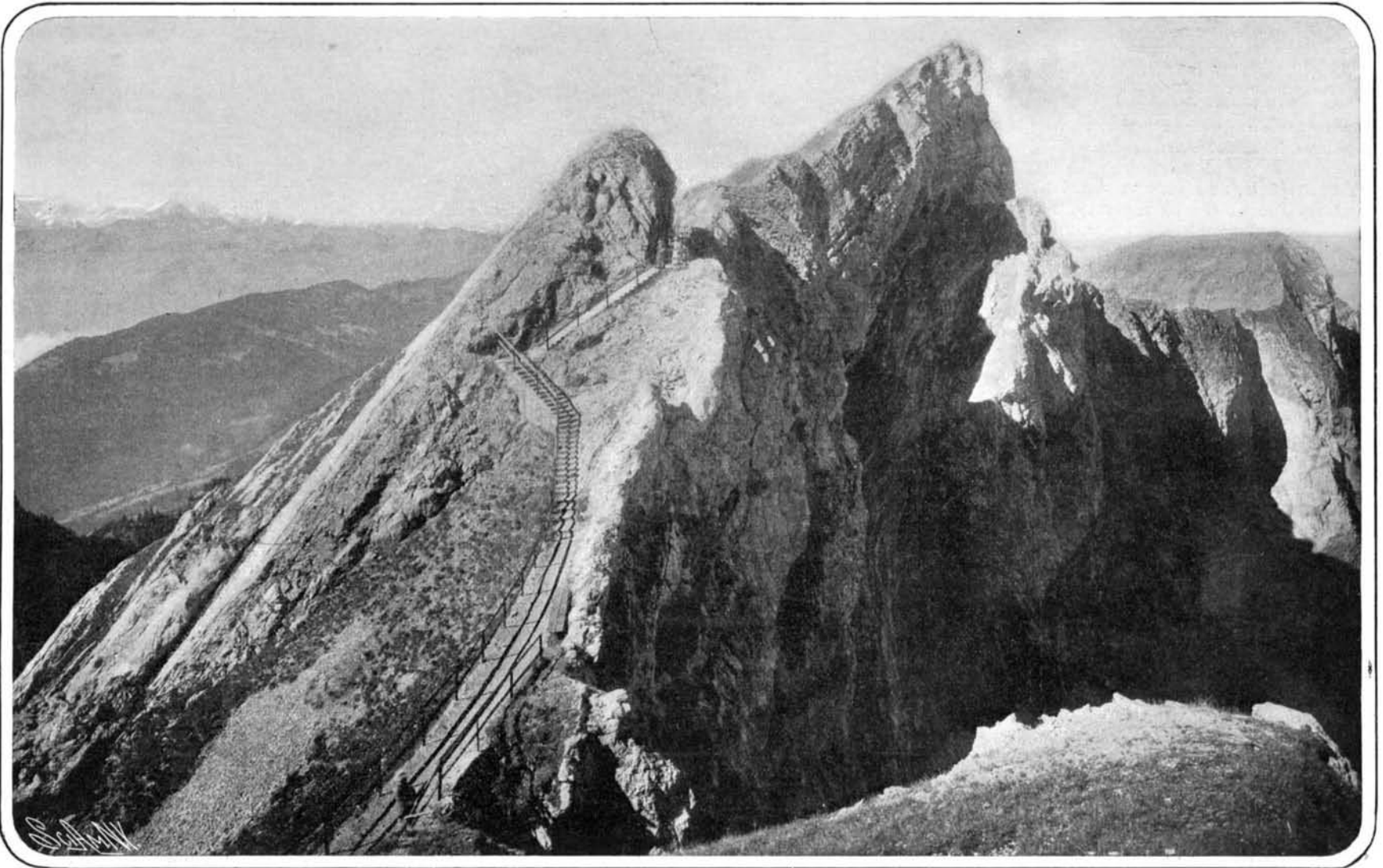
SCIENTIFIC AMERICAN

[Entered at the Post Office of New York, N. Y., as Second Class Matter. Copyright, 1904, by Munn & Co.]

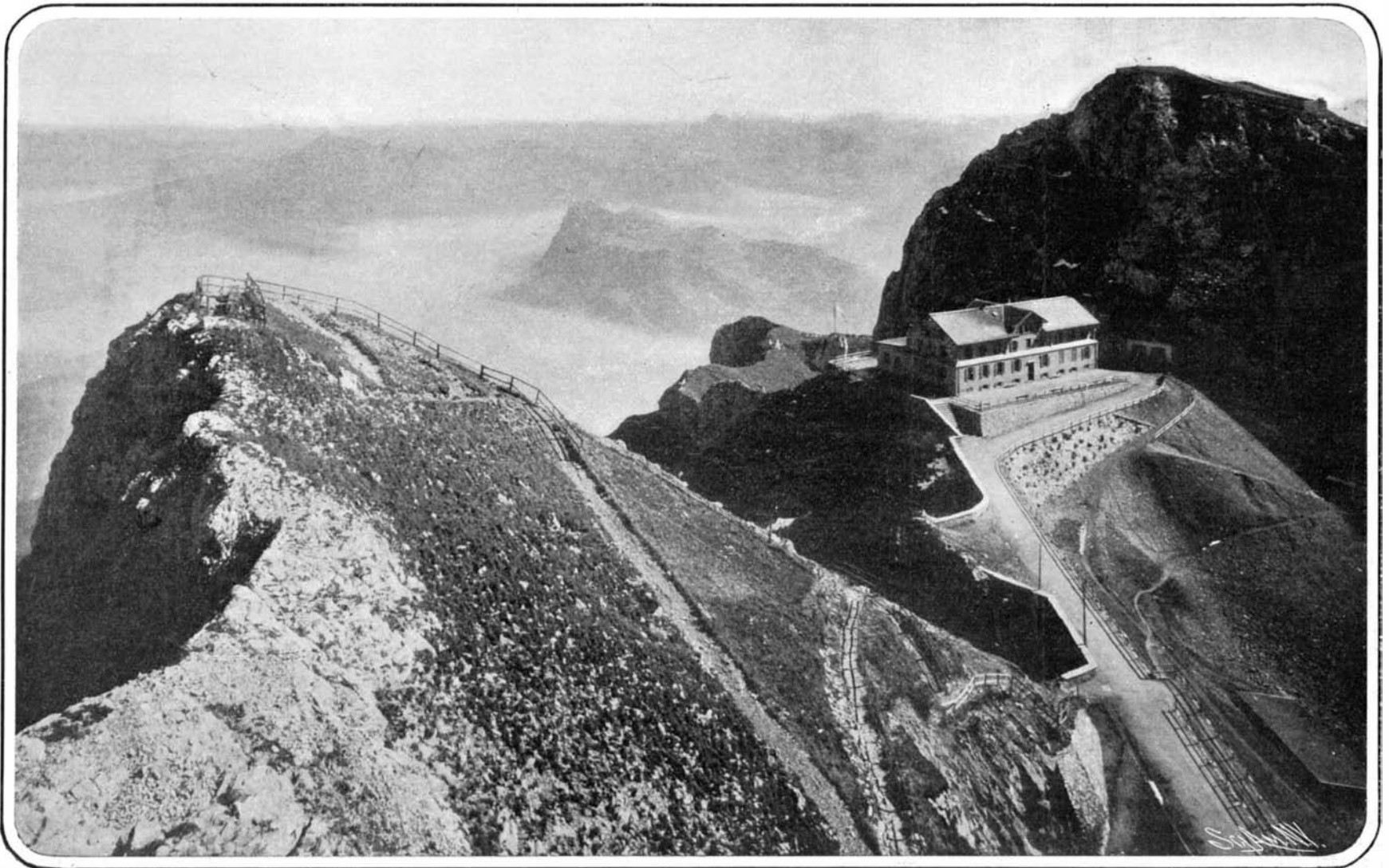
Vol. XCI.—No. 7.
ESTABLISHED 1845.

NEW YORK, AUGUST 13, 1904.

[8 CENTS A COPY
\$3.00 A YEAR.]



The Tomlishorn, 6,996 Feet High—A Noble Peak in the Alps.



Mount Pilatus and the Vierwaldstaettersee.

THE MOUNT PILATUS RAILWAY, SWITZERLAND.—[See page 110.]

SCIENTIFIC AMERICAN

ESTABLISHED 1845

MUNN & CO., - - Editors and Proprietors

Published Weekly at

No. 361 Broadway, New York

TERMS TO SUBSCRIBERS

One copy, one year for the United States, Canada, or Mexico, \$3.00
One copy, one year, to any foreign country, postage prepaid, £0 lbs. 5s. 4d.

THE SCIENTIFIC AMERICAN PUBLICATIONS.

Scientific American (Established 1845).....\$3.00 a year
Scientific American Supplement (Established 1876)..... 5.00 ..
Scientific American Building Monthly (Established 1885)..... 2.50 ..
Scientific American Export Edition (Established 1878)..... 3.00 ..
The combined subscription rates and rates to foreign countries will be furnished upon application.
Remit by postal or express money order, or by bank draft or check.

MUNN & CO., 361 Broadway, New York.

NEW YORK, SATURDAY, AUGUST 13, 1904.

The Editor is always glad to receive for examination illustrated articles on subjects of timely interest. If the photographs are sharp, the articles short, and the facts authentic, the contributions will receive special attention. Accepted articles will be paid for at regular space rates.

FOUR LEADING FOREIGN EXHIBITS AT THE WORLD'S FAIR.

In any comparison, no matter upon what it may be based of the display made by the various nations at the St. Louis Exposition, the magnificent exhibit made by Germany easily takes the place of honor. At the same time, when we remember that the effort of Japan was made under the shadow of an ominous war-cloud, that foretold for that gallant nation a life-and-death struggle, there will be many to whom it will seem that the scarcely less varied and voluminous exhibit of that wonderful race is entitled to equal if not greater consideration. The world has heard very much of late years about the remarkable advance that Germany has made in practically every branch of the arts and sciences. To-day we have the record of that advancement spread out before us at St. Louis, in concrete form. The display is arranged on an orderly plan so well conceived and carried out that not only is the greatness of Germany thrust upon one at the very first glance, but the story is told in marvelous detail and with most fascinating and picturesque effect throughout all the great buildings of the Exposition.

Germany.

It is not too much to say that to the Emperor William himself is to be attributed, more than to any other agency, both the breadth and detail of this exhibit. The Germans themselves readily and affectionately admit this. In the first place it was he who conceived the happy idea of placing the executive offices of the German Commission in a large separate building, which should be an exact reproduction to scale of a considerable portion of the Royal Castle of Charlottenberg. Had Germany done nothing more than this, she would have been well represented; for the castle itself is filled with some rare and characteristic specimens of German art, and is enriched by much of the actual furniture and furnishings brought over from the royal residence for exhibition in this building. A distinct advance has been made over previous expositions by placing the architectural features (in the way of inclosures and inside pavilions for the aggregate exhibits in separate buildings) in the hands of an architectural commission, and the work that they have done is not only highly meritorious and becoming, but it bears the broad stamp of modern German art and serves at once to collect and unify in the eye and mind of the visitor the various separated elements in the German display. Another striking feature, resulting from the orderly and discriminating plan on which the exhibit has been laid out, is that there is a most refreshing absence of the ordinary and commonplace—what might be called the stock or shop-window order of display. Everything is of the very best and most distinctive. Moreover the exhibits have been chosen with a view to illustrating those particular phases of German industrial and artistic development which are most characteristic of the Germany of today. This is true of the superb exhibit of German arts and crafts in the Varied Industries Building; of the extraordinary rich and elaborate scientific and technical apparatus in the Educational Building; of the large collection of apparatus for the testing of foods and for laboratory research in the Agricultural Building; and of the more limited display in the Machinery and Transportation Buildings. Any thoughtful student of what Germany has done at St. Louis will, after making the tour of her exhibits, be well able to understand the secret of the marvelous growth that that country has made during the past three decades in the worlds of art, industry, and commerce.

Japan.

Next in order of merit comes the extensive display made by that other great industrial country—Japan. It is rendered the more remarkable by the fact that it was cheerfully undertaken and carried through, first under the shadow, and now under the actual stress, of one of the greatest wars in history. The commercial and industrial rise and progress of Japan, like

that of Germany, is a story that loses none of its interest in the telling. What the student has learned from government statistics, from magazine and newspaper literature, and from books of travel devoted especially to the theme, he may here behold spread out before him in picturesque profusion, both in the charming Japanese garden where the Commission makes its home, and in the many acres of space which Japan requested, and promptly filled up with the products of the Island Empire. That Oriental Garden with its picturesque pavilions, its tiny lakes and waterfalls, its grottoes, its miniature trees and characteristic shrubberies, its quaint statuary, to say nothing of its tea houses where the westerner may drink Japanese tea handed to him by Japanese girls in their picturesque attire, was bound to become one of the choicest and most popular resorts of the fair. Here one may meet the chief commissioner, who with characteristic Japanese courtesy will give a brief summary of what Japan has aimed to do in bringing over 500 native Japanese to care for and exploit the \$1,500,000 worth of display which tells of Japanese industrial life and commercial greatness.

And, by the way, there is a remarkable parallel in many respects between the two great nations that have given such distinction to the St. Louis Fair. The Japanese exhibit, like that of Germany, is distinguished by its comprehensive and orderly arrangement. Come upon it when you may, it is surrounded by distinctive Japanese architecture, not indeed so distinctive or elaborately carried out as that of Germany, but still sufficiently defined to render a Japanese exhibit recognizable at first sight. Then, moreover, the exhibits are arranged evidently with a view to producing a definite educational result upon the visitor. In whatever department of industry one may happen to find himself, the exhibit almost invariably commences with the raw material and carries the interested observer up through the successive stages until the finished product is reached.

It is impossible to go into details; but mention should be made of the exhibit in the Agricultural Building, which is devoted chiefly to the great tea industry of Japan; also of the very extensive display in the Transportation Building, showing the remarkable development in the past three decades that Japan has made of postal, railway, telegraph, and steamship enterprises. Here one may see a huge relief map, 100 feet in length by 50 in width, showing the whole Japanese empire, including Formosa, and indicating by various colored lines every mile of railroad track, and telegraph or telephone wires, and the routes traversed by the great steamship companies. In the Varied Industries Building is a bewildering display of all that is rich, rare, grotesque, or beautiful in Japanese art. Bronzes, porcelains, silk embroideries, richly-chased and engraved silver and gold work, characteristic carving on wood and ivory, enamel work on silver, gold, and bronze, and a thousand dainty objects of the kind that are dear to the heart of the connoisseur. Lastly, there is the instructive display in the Palace of Manufactures, where one may learn everything about the manufacture of silk goods in the Island Empire, from the hatching of the silkworm eggs up to the weaving of the silk into the finished fabric; while adjoining it is a splendid display of Japanese matting, 600 rolls in all, which by the way is only one-fifth of the 3,000 rolls that Japan brought over but had not room to display. The educational display also of Japan, though not by any means so large as that of Germany, is equally illustrative of the very up-to-date methods of the Japanese educational system. Here one may see the work turned out by the Imperial School of Art at Tokyo, or he may study samples wrought by tiny fingers in the Japanese kindergarten schools; while near by are some delicate instruments for measuring seismic disturbances, that are reminiscent of that great scourge of Japan—the earthquake.

Great Britain.

If much of the success of the German exhibition is due to Emperor William it must also be admitted that the very fine effort made by Great Britain at the fair is largely indebted for its success to King Edward, who devoted much personal attention to the subject and secured the appointment of the Prince of Wales as Chief of the British Commission. Great Britain is one of the foreign nations that have expended much of their appropriation upon the pavilion which forms the headquarters of the commission. It was determined in making choice of the type of architecture to be followed that the Royal Palace of Kensington would be very representative of English domestic building at one of its happiest periods, and that the structure would serve as a tribute to the memory of that great architect, Sir Christopher Wren, to whom Great Britain is indebted for her great national cathedral in London. The Orangery, which is 170 feet long, has a long line of roof broken only by three brick parapets or pediments. Built of red brick with white stone relief, with its surrounding gardens illustrating the Dutch gardening which was brought in by William, Prince of Orange, the building admirably portrays one

of the best schools of architecture of a people who have ever been famous for the comfort and quiet dignity of their domestic homes.

The interior of the building is in part a reproduction of the furnishings and fittings of that day, and it contains several rooms that are illustrative of the best interior art with some of the leading firms in Great Britain. The British exhibit, although by no means so large as the two already mentioned, is nevertheless very extensive, and is indeed the finest ever made by that country at an international fair. The portion of it that perhaps is attracting most popular attention is the superb exhibition of the Queen's Jubilee presents, shown in one of the stone buildings of Washington University, which latter forms the home of the exposition administration. As befits the greatest maritime nation in the world, a large section of the Transportation Building is devoted to a display made by many of the leading British steamship and railway companies. The models of steamships are particularly fine, notably the historical group shown by the Cunard Steamship Company, in which is to be found a superb model of the 800-foot, 25-knot turbine steamers that are now under construction for that company. In the southwest corner of the Varied Industries is to be found a collection of British exhibits, every one of them of a very high order, showing the best work of Great Britain in various arts and crafts, and notably in that of interior decoration, in which she has won for herself such a well-earned repute. Large space has been taken up in both the Agricultural Building and the Liberal Arts with characteristic display; but it is in the Fine Arts Building that she has made her supreme effort; and here we find a rich collection of the very best work of the modern English school. In closing our notice mention should be made of a small building in the southeast corner of the grounds devoted to the exhibition of low-temperature experiments; in connection with which lectures are given bi-weekly and practical demonstrations made of the remarkable results that have been obtained in this field by the physicist during the past few years.

France.

France easily holds her place in all those lines of competition with the other nations of the earth at the World's Fair in which she has made exhibits, and in cases where special effort has been made the nation is rightly entitled to hold first place. Although her display is not comparable in size and variety with that of some of the nations, it is, as far as it goes, exceedingly fine and is surely entitled to take rank with that of Great Britain. Her greatest effort, however, has been expended upon the handsome pavilions and extensive and beautiful gardens which surround it. Copied after the Grand Trianon at Versailles the structure embodies all the beauty of French architecture in the Renaissance.

The pavilion is a reproduction of a chateau which was built by Louis XIV. for Madame Maintenon. All the government factories aided in furnishing and decorating the building, which, both within and without, is in itself an extensive exhibit of the best in French art and architecture. France is represented more or less in every section of the grounds, but her finest exhibits are the automobiles of which she shows some 40 or 50 of her very latest types in the Transportation Building; her superb line of costumes, high-priced gowns, furs, toilet articles of dainty design and exquisite finish; and last and perhaps finest of all, her rich and varied display in the Fine Arts Building. In the heavy engineering trades France has not done as much as in former national expositions; but what she has shown bears the characteristic excellence of material and beauty of finish to which we have become accustomed. A large vertical triple-expansion high-speed engine of 1,500 horse-power in the Machinery Building, and a handsome De Glehn express compound locomotive in the Transportation Building bear testimony to the skill of the mechanical engineer; but one could wish that France had done more in these lines where she has won such world-wide reputation.

THE PENETRATING POWER OF "N,-RAYS."

Prof. Blondlot recently drew attention to a novel kind of N-rays, diminishing, instead of augmenting, the phosphorescence of calcium sulphide. These rays, called by him "N,-rays," are given off from a Nernst lamp simultaneously with the N-rays, and are also produced by stretching out a copper, silver, or platinum wire.

In a memoir recently presented to the French Academy of Sciences, Mr. Julien Meyer describes some experiments with these N,-rays, produced by an extended glass or copper wire or else by a closed glass tube in the interior of which the pressure is diminished. The glass of the tube, on account of the strain resulting from the difference in pressure, was in fact found to be a powerful source of N,-rays. The brilliancy of a screen covered with sulphide spots and introduced into a glass bulb resting on the plate of an air pump would diminish when the machine was

started, but would recover its initial value as the air was allowed to re-enter. If the sulphide screen be placed outside of the bulb, the phosphorescence would likewise diminish from the very first stroke of the piston. An incandescent lamp bulb, not traversed by any current, a hydrogen Geissler tube, a Crookes' tube, were all found to be sources of N_1 -rays without being actuated by a Ruhmkorff coil.

While the N_1 -rays from a Nernst lamp are arrested by an oxidized lead plate or by a sheet of moistened paper, those issuing from the sources named are gifted with a high penetrating power; in fact, the action of incandescent lamp bulbs on the screen is not appreciably diminished if between the bulb and the screen there be inserted a board 10 centimeters in thickness or a sheet of oxidized lead one millimeter in thickness and folded round itself so as to be traversed eight times, or else a glass vessel filled with pure water. Pasteboard, paraffin, aluminium, zinc, iron, copper, silver, gold, mercury, and the hand are also transparent to these radiations. The only opaque bodies found were platinum of a thickness of 1 millimeter and opalescent glass 3 millimeters in thickness.

While examining the refraction of the rays by means of an aluminium lens, the author stated that this metal would store the rays in great amounts, giving them off again for more than twenty-four hours after it had been withdrawn from the source. A similar power, though of smaller intensity, was found in the case of ordinary glass; while lead, copper, and pure water did not show it.

Salt water and a solution of sodium hyposulphite in water, on being submitted to the action of a source of N_1 -rays, would become active themselves, acting as sources for a very long time.

When the hand is held for some time at a small distance from a source of N_1 -rays or touching the latter, the hand would diminish itself the phosphorescence of the screen, this property being kept for some minutes.

N_1 -rays as given off from the above sources are refracted by glass, copper, and aluminium prisms and diffracted by a grating.

THE POSITION OF THE RANGE FINDER ON A WARSHIP.

The British Admiralty has suspended the practice of fitting the position of the range finder on an electric-light platform placed on the foremast of a warship. It is imperative, to facilitate the firing of the guns, that the means of ascertaining and transmitting the range from the vessel to the antagonist be communicated to the gun crew with complete security, from a perfectly reliable observing position. The decision of the Naval Department is due to the result of the engagement between the Russian warship "Variag" and the Japanese fleet. In this conflict the men operating this vital department were rendered *hors de combat* early in the engagement, with the result that the gun crews on the "Variag" labored under great disadvantages. From this it is conclusively demonstrated that any observation post placed in the fighting tops is impracticable. The Japanese themselves have also recognized this crucial point, and in their new vessels that are in course of construction in England, special armored observation towers are to be erected at various advantageous positions on the ships for the installation of the range-finding apparatus. In the case of the British Naval Department no decision has been arrived at, though the matter is under discussion and investigation.

RENARD'S NEW BOILER FOR AIRSHIPS.

It is reported that Col. Renard, the well-known director of the government aerostatic park near Paris, has succeeded in constructing a new type of extra light boiler. He expects that it will go far toward solving many important problems, both in aerial navigation and the marine. In 1894 he commenced to study a light form of boiler which could be applied to aerial navigation, and built a first specimen of 80 horse-power which weighed no more than 1.50 kilogrammes (3.36 pounds) per horse-power. Encouraged by this success, he commenced to design a high-power boiler of the same type which should give 1,000 or 1,200 horse-power, in view of using it for the marine. The problem was not an easy one, as it was required to obtain a rapid vaporization and high production while keeping down the weight or the space occupied, and remaining within the limits of 2 kilogrammes per horse-power, or one-fourth of the weight of the lightest boilers known. Some time ago Col. Renard brought out the first boiler of 300 horse-power in which he claims to have realized all the above conditions. It consumes but 0.434 kilos per horse-power-hour, while the best European boilers take 0.700. It heats very rapidly, and at the end of 7 minutes the pressure is sufficient for working; in 15 minutes it is brought up to the normal rate. He uses liquid fuel, heavy oil, which is inexplosible. The apparatus is also completely smoke-consuming. Such a smokeless boiler, rendering a warship invisible at a distance, will be

greatly appreciated in the marine. The steam which is produced is absolutely dry. Another remarkable quality of the new boiler is the absence of external radiation. It does not give off any perceptible heat in the boiler room. It is extinguished in half a minute, cooling down at once. According to the latest reports, the French government is convinced of the advantages which can be obtained from such a boiler in the marine, and is about to test it upon two vessels of the fleet. In the case of torpedo boats, allowing the same speed as before, the radius of action would be increased from 175 to 683 miles. Or with the same radius the speed increases from 31 to 35 knots. For a warship of modern type (keeping a speed of 10-knots) the radius of action would be increased from 9,000 to 24,300 miles, nearly tripling the distance and allowing the vessel to make a complete passage around the globe without taking on combustible. The details of the system are of course kept secret for the present.

A NEW CUNARDER.

The new twin-screw liner for the Cunard transatlantic intermediate service has been launched on the Clyde, from the shipyard of Messrs. John Brown & Co., Ltd. Mrs. Choate, the wife of the United States ambassador to Great Britain, performed the launching ceremony. This vessel, which is named the "Caronia," is the largest which has been built in a Clyde yard. It is 678 feet in length, beam 72 feet, depth to shelter deck 52 feet, and displacement 21,000 tons. It is fitted with ordinary reciprocating engines developing 21,000 horse-power and capable of attaining a speed of 18 knots. The vessel will have accommodation for 300 first-class, 350 second-class, 1,000 third-class, and 1,000 steerage passengers, while the crew complement will number 450. This vessel is a remarkable example of rapid construction. The keel was only laid in September last, and the steelwork is now practically completed, while the woodwork is far advanced. The sister ship "Carmania," is also in course of erection at the same shipyard. This vessel is to be fitted with the Parsons turbines and it is with these two vessels that the Cunard company intend to obtain comparative data concerning the advantages and merits of the two systems of propulsion for Atlantic liners.

THE NATIONAL GEOGRAPHIC CONGRESS.

The National Geographic Congress which will be held in this country in September promises to bring together an unusually large assembly of an international character, for the committee of arrangements have received information that many of the most noted savants of Europe will be present and take part in the various sessions. The congress will be the seventh which has thus far been held, the last meeting at Berlin in 1899. While it will be convoked in Washington, meetings will be held not only in that city, but in Philadelphia, New York, Chicago, and St. Louis, in connection with field sessions on the Hudson River and at Niagara Falls. From the present indications nearly, if not actually a thousand scientists will attend, and the committee in charge has the promise of a wide variety of papers on various subjects by authorities whose reputation is international.

Under the subject of physiography will be discussed meteorology by such authorities as Prof. R. DeC. Ward, Cambridge, Mass.; Prof. R. F. Stupart, Ottawa; Dr. W. Meinardus, Berlin; Dr. K. Kassner, Prussian Meteorological Institute; Henryk Arctowski, Brussels, Belgium. Oceanography will be treated by Prof. R. A. Harris, Washington; Prof. Knipowitsch, St. Petersburg; Sir John Murray, Edinburgh; Prof. J. J. Rein, Bonn; Prof. E. Witte, Brieg, Germany; Prof. J. Thoulet, Nancy, France. Among those who will discuss volcanoes are Dr. Hovey and Prof. Heilprin, of this country, and Paul de la Blache, of Paris. The writers on earthquakes will include Count de Montessus de Ballore, Abbeville, France; Prof. E. Rudolph, Strassburg, Germany; Prof. A. Schmidt, Stuttgart, Germany; Prof. de Kovesligethy, Budapest, Hungary. Those on glaciers will include G. Vaux, Jr., Philadelphia, Pa.; Dr. Axel Hamburg, Stockholm, Sweden; Henry Arctowski, Brussels, Belgium. Other divisions will include mathematical geography and the economic features of geography, while it will be treated also from the historical and educational point of view.

In addition to the authorities referred to, others who will participate are as follows: Dr. Oskar Drude, Dresden; G. Grandidier, Paris; Prof. F. Starr, Chicago; Prof. W. J. McGee, Washington; A. Chevalier, Paris; C. Rabot, Paris; Mrs. Fanny Bullock Workman, Worcester; Robert T. Hill, Washington; D. C. Gilman, Washington; Henry Gannett, Washington; A. de Claparede, Geneva, Switzerland; Dr. A. Funke, Berlin; C. Gauthiot, Paris; Sir H. H. Johnston, London; Prof. E. T. Gautier, Algiers; Georges Blondel, Paris; Prof. Guido Cora, Rome; Gilbert H. Grosvenor, Washington; Dr. Eugen Oberhammer, Vienna.

The congress will convene formally in Washington on September 8, in Philadelphia on September 12, and in New York the following day. From New York the party will go to Niagara Falls, where a general field

meeting will be held in charge of geographers familiar with the region. The members will assemble in Chicago on September 17 and in St. Louis on September 19, the congress formally closing on September 22. The programme, however, includes a southwestern tour from St. Louis, which will include the Grand Canyon of the Colorado and a portion of Mexico.

The hosts of the congress will be the various societies interested in geography in the United States. These include the National Geographic Society, American Geographical Society, Geographical Society of Philadelphia, Geographical Society of Chicago, Geographical Society of Baltimore, Geographical Society of the Pacific, Geographical Society of California, Peary Arctic Club, Appalachian Mountain Club, American Alpine Club, Mazamas, Sierra Club, and Harvard Travelers' Club.

THE AUTOMOBILE TOUR TO THE WORLD'S FAIR.

The St. Louis tour has progressed finely during the past two weeks, and the participants make up in enthusiasm what they lack in numbers. Sixteen machines started from New York on Monday, July 25. One of these—a Yale touring car equipped with solid tires—broke its transmission gear and dropped out during the second day's run, the accident being caused by the carelessness of a repair man who left a small tool in the transmission gear case when overhauling the car before its start. This car was repaired and rejoined the others at Toledo. Its performance will be watched with interest, as it is the only car equipped with solid tires. The place of the Yale car was filled the third day by J. H. Waters' 24-horse-power Panhard, which made the entire 150-mile run from New York to Albany on July 26 in 12 hours, 35 minutes. This and the two 40-horse-power Mercedes cars of Harlan W. Whipple and James L. Breese, which joined the tour at Albany and Buffalo respectively, were the only foreign cars entered. Their performance over American roads has been very creditable, although Mr. Whipple's Mercedes seems to have had a considerable number of breakdowns to its mechanism. Eleven cars reached Albany from Boston and other eastern points, and, in all, twenty-four started for and reached Utica the third day. There had been considerable rain and the roads were execrable. There were several skidding accidents, but Harold Pope's Pope-Hartford car was the only one to be damaged. This machine bent its front axle by skidding into a gutter. A 3,600-pound Peerless machine skidded off the road, but, with the aid of horses and tackle, it was finally got on again. A protest was made to the county authorities about the condition of the road, to the effect that "throughout the civilized world there does not exist a road in such wretched condition that connects so many important cities and towns." From Utica on, the roads were fair, although heavy in many places on account of rain. Buffalo was reached Saturday, July 30, and was left Monday. The second week the tourists finished at Chicago. The principal events of this week were a night run from Erie to Cleveland, participated in by five White steam touring cars and one Royal; a 121-mile run over bad clay roads from Cleveland to Toledo in one day; and the entrance into Chicago under escort of numerous automobilists of that city, on Saturday. Ten machines joined the tour at Cleveland, making thirty-four in all. The only accidents recorded were the overturning of a runabout by slewing in deep sand and the running into of an express train by the huge 70-horse-power Peerless car at a dangerous grade crossing. Although both car and train were damaged, no one was seriously hurt. The puncturing and giving out of tires, especially on the heavy cars, has been one of the most troublesome features of the tour. One touring car had four inner tubes burst in a single day. The almost universal use of double-tube tires renders repairs on the road a comparatively easy matter, however. The combination runabout and light touring car has shown itself just as reliable and as capable as has the powerful touring car, with the additional advantage of less tire trouble.

The two-cycle Elmore tonneau in the present tour had just finished a trip to St. Louis before starting out this time, while F. A. La Roche, in a Darracq touring car, succeeded in beating the world's record non-stop run, by traveling to St. Louis and back as far as Columbus without once stopping his engine. He hopes to create a record of 3,000 miles, the old one being 2,017.

It is not yet half a century since Col. Drake discovered petroleum on the waters of Oil Creek, near Titusville, Pa. The total production of crude petroleum from 1859 to 1902—forty-three years—has been no less than 1,165,280,727 barrels. Of this output, Pennsylvania and New York contributed 53.9 per cent; Ohio, 24.3 per cent; West Virginia, 11.3 per cent; Indiana, 3.9 per cent; California, 3.6 per cent; Texas, 2.1 per cent, leaving 9 per cent to be supplied by Kansas, Colorado, Louisiana, Illinois, Missouri, Indian Territory, Wyoming, Michigan, and Oklahoma.

THE UNITED STATES MARINE CORPS.

BY WALDON FAWCETT.

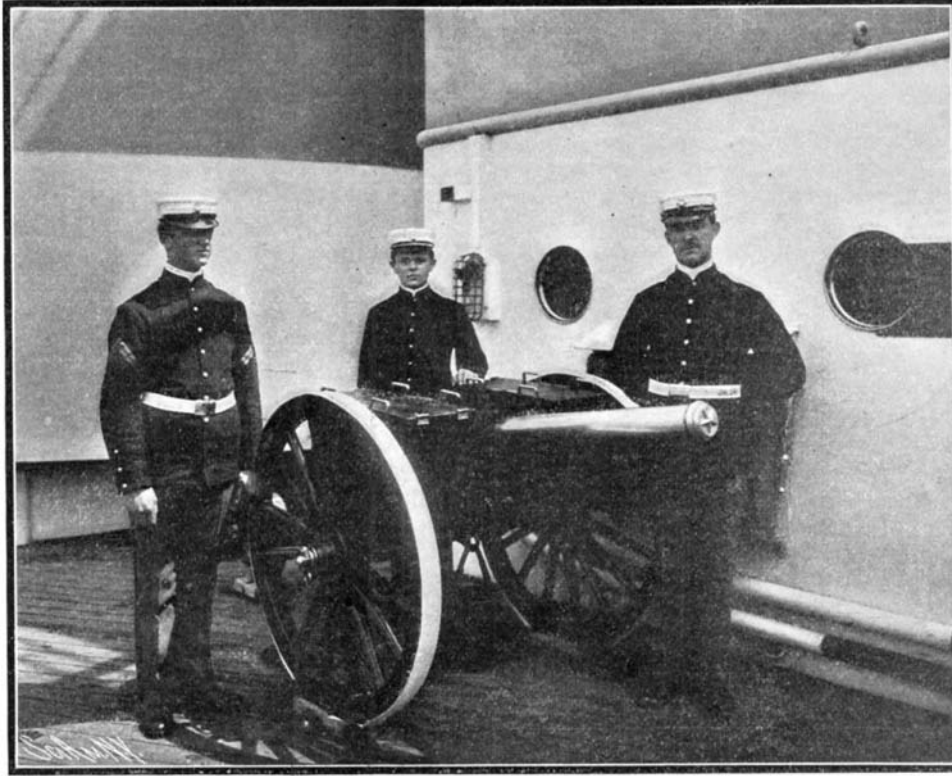
The United States Marine Corps is an organization which antedates the Constitution of the nation, but it is only during the past few years, or, to be exact, since the Spanish-American war, that it has gained general recognition as one of the most valuable and important branches of our fighting service. There has been a disposition on the part of some persons to confuse the marines with the seamen or "blue jackets" of the navy, from whom they are in reality entirely separate and distinct. Indeed, the marines more closely resemble soldiers than sailors although their duties partake of some of the characteristics of each service.

On shore duty the marines conform to army regulations and are expected to combine to a considerable extent the functions of the infantryman, engineer, signalman and light artilleryman. In order to permit this versatility of operations the working equipment of a detachment of marines detailed for shore service embraces Krag rifles, Colt automatic, Gatling, or some other type of rapid-fire guns, picks and shovels for throwing up entrenchments, and apparatus for signaling by night or day. On shipboard the marines have nothing to do with navigating the vessel, but man the secondary batteries, act as sharpshooters in the military masts, and in the event of a conflict at close quarters are depended upon to repel the attacks of boarders. The United States marines range from eighteen to thirty-five years of age and have an average height of five feet six inches. The men enlist for a period of five years and receive from \$13 to \$22 per month, in addition, of course, to food, clothing, medicines and, in short, every necessity. The privates of the Marine Corps are not sent to sea until after they have been thoroughly drilled in their various duties at one or another of the training schools maintained at Washington, Annapolis, Brooklyn, Norfolk, Boston, Portsmouth, and League Island. The work of these institutions includes the drills of the soldier, company and battalion, skirmishing, target practice, and bayonet exercise as well as all military duties and ceremonies. The marines wear khaki when oc-

casation warrants, but are possessed of a full-dress uniform, which is possibly the most conspicuous worn in any branch of the United States military service. The caps and coats are of dark blue; the trousers and overcoats of light blue, trimmings being of scarlet. The marine, when on board ship, is assigned the regular blue-jacket ration, which is accounted as equiva-

foreign sailors to be true to the flag under all circumstances. The marines, on the other hand, are almost without exception American born and the detachment on a ship constitutes a body separate and distinct in interests and sympathies from the crew proper.

Officers of the Marine Corps are on the same footing as to rank and privileges as similar grades in the army. Of late a movement has been inaugurated to give them a higher degree of technical knowledge, and applicants for an officer's position in the corps must spend a year or more in the Annapolis school for the instruction of commissioned officers of marines. The increasing governmental appreciation of the value of the Marine Corps as a branch of the military establishment is found in the fact that whereas, a few years ago, the ranking officer of marine could have no higher rank than colonel, Gen. Elliott, the new commandant, has the rank of brigadier-general and has fully 8,000 men under his direction. Of this full strength several hundred are boys, ranging from fourteen to twenty-one years of age, who have been enrolled as buglers and drummers, and two of whom are attached to every United States war vessel carrying marines.



UNITED STATES MARINES WITH FIELD PIECE.

lent to thirty cents, but, when on shore, receives the army ration, which is rated at seventeen cents per man per day. When landed from war vessels it is, of course, essential that the marines travel in light marching order and accordingly they do not make use of the regulation army tents but use instead the Sibley tents. One of these tepee-like shelters will accommodate sixteen men, sleeping with their heads together at the center pole and their bodies reaching out in all directions like the spokes of a wheel.

While the marine is supposed to know something of the sea he is not presumed to be a good seaman, and is never called upon to help coal the ship or perform other tasks which rank as the especial duties of the enlisted men of the navy. For the most part the work of marines afloat is made up of such light tasks as guard or sentry duty and service as "mail orderlies" or official messengers between ship and shore. The marines are entitled to much of the credit for the superior marksmanship which has been the most striking feature of this country's naval progress since the Spanish war. Formerly the responsible position of gun-pointer was open only to seamen, but now there is an opportunity for any enlisted man on a warship to win the extra pay and prizes which attach to this coveted post, a gun-pointership being a rating rather than a position. Not only are numerous marines serving as gun-pointers, but there are on the prominent American naval vessels not a few guns which are manned entirely by these "soldiers of the sea."

One of the most important but little emphasized functions of the United States Marine Corps is found in its influence against mutiny on the vessels of the American navy. The necessity for such a safeguard will be better appreciated when it is taken into consideration that in seeking men for the rapidly-growing navy the enlistments sometimes show twenty foreigners to one American, and it is hoping for too much to expect a set of

derives its light from the vapor of mercury, which is raised to a high state of incandescence by the electric current passing through it. The light produced by all of the other forms of electric lamps depends on the incandescence of a solid, which is sometimes carbon and at other times other material in the form of rods or filaments, as in the arc lamp, the incandescent lamp, and the Nernst lamp.

The accompanying illustrations (Figs. 1 and 2) show the mercury vapor lamps as employed in the photographic studio of Mr. E. C. Pratt, at Aurora, Ill. The illustration, Fig. 1, shows the Cooper Hewitt lamps in position for making negatives, the mercury light being used as a perfect substitute for daylight, while

(Continued on page 111.)

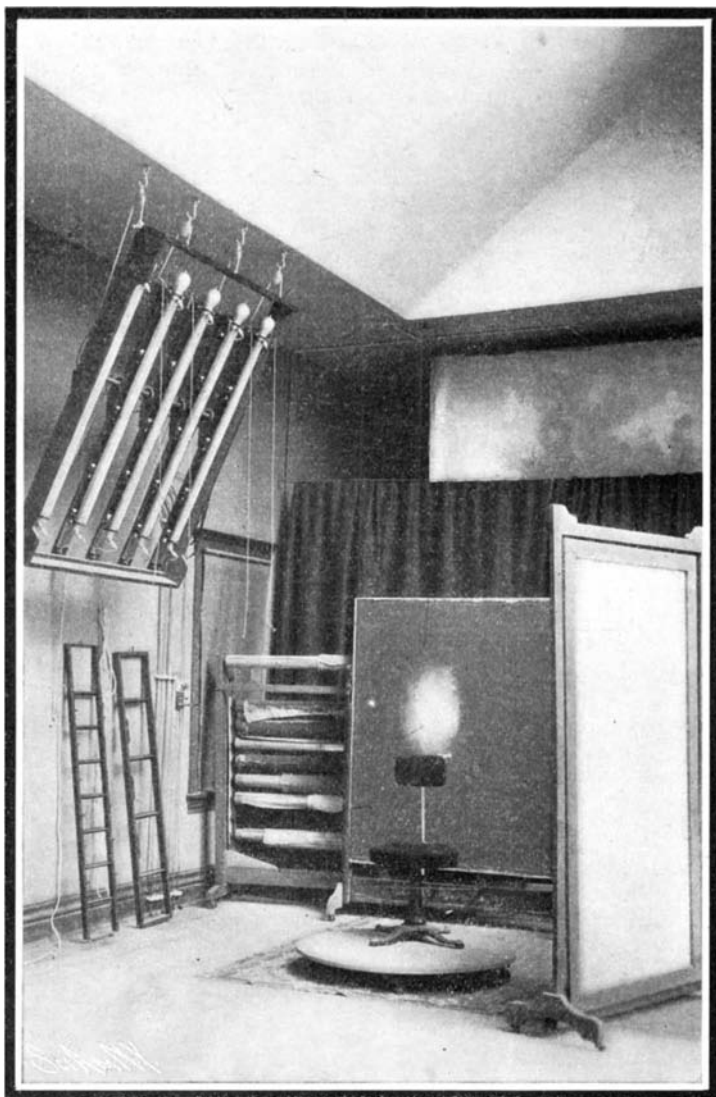


Fig. 1.—The Cooper Hewitt Lamp in the Photographic Studio.

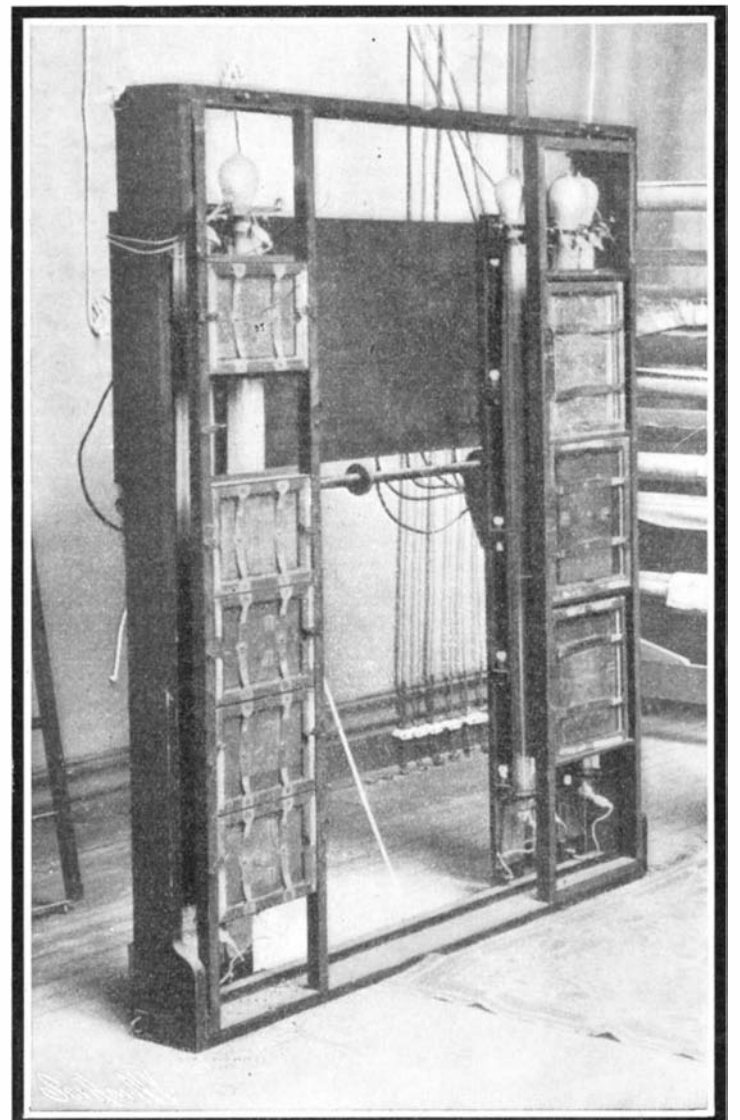


Fig. 2.—The Cooper Hewitt Lamp Used for Printing.

THE MERCURY VAPOR LAMP FOR PHOTOGRAPHIC WORK.

THE UTILIZATION OF SNAKE VENOM IN PREPARING ANTI-BUBONIC SERUM.

BY A. F. SHAW.

Two years ago, when the bubonic plague was making many victims here in the city, the supply of anti-bubonic serum in Rio de Janeiro being insufficient to meet the needs of both cities, the "Instituto Serumtherapico" was opened for its manufacture. Dr. Vital Brazil, educated in the American school of this city and the medical school of Rio, a man who had shown his fearlessness of the disease by fighting it at Santos when it was at its worst, was put in charge. The wisdom of the choice is clearly manifest now, not only because of the results obtained along the lines laid down at the beginning, but along others which will soon be mentioned.

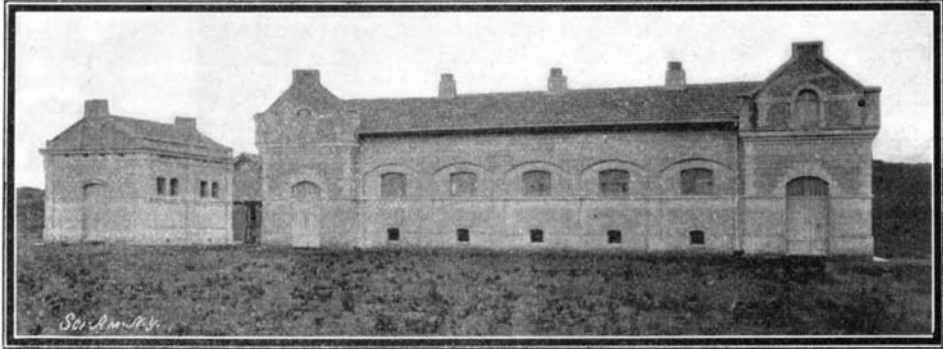
nually in Brazil from snake bites. This enormous mortality is due to the fact that, in the interior, the laborers work without shoes or stockings. Dr. Vital has proved conclusively by a long series of experiments that the ordinary antidotes used in the case of snake bites are not always sure nor safe. Permanganate of potassium is effective if injected in the exact place of the bite and immediately; cauterization destroys the tissues and with them the poison, but if not done immediately is useless. He has also experimented with the numerous herbs, concoctions of which are used, but the results have been negative in every case. Many of these remedies have been used with apparent success simply because only 25 per cent of snake bites are fatal.

In order to carry on these experiments a number of

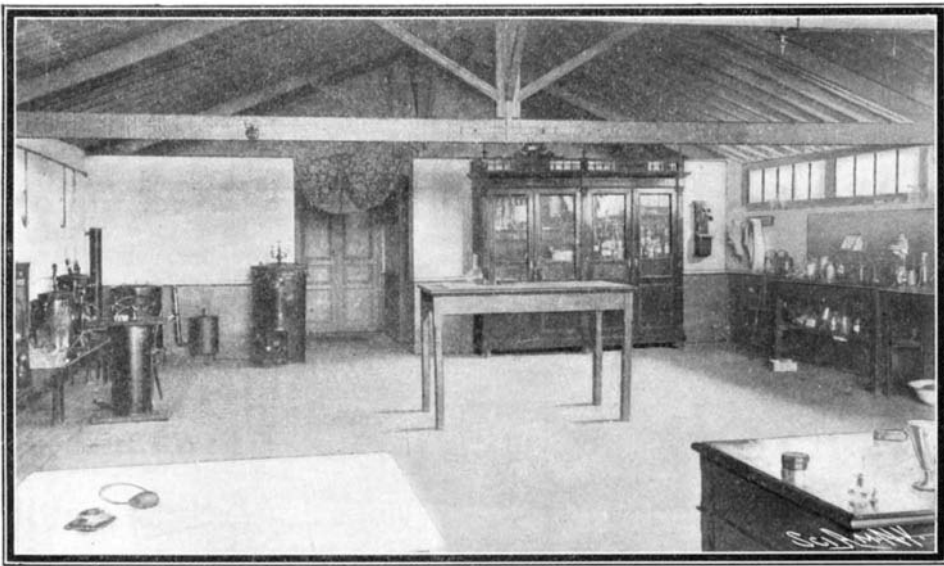
snakes were necessary. To catch them Dr. Vital chose a lasso invented by Dr. Lutz, of this city, which consists in a strap which passes around the end of a stick and under a metal bridge to which a cord, a little longer than the stick, is attached. The strap when loose furnishes a noose which can be slipped over the head of the snake, and on being tightened, secures the head of the snake against the stick. This is the method used both to catch wild snakes and those in captivity when their poison is to be extracted. Having caught the snake the assistant grasps it behind the head, and the doctor, with small pincers, pries open its mouth, pushes the membrane from the fang, and seizing its head, with thumb and forefinger on the poison-producing glands, presses out the clear liquid in drops. This liquid is then evaporated at 38 deg. C. or in the sun and is ready for solution when necessary.

"The poisonous snakes of Brazil," says Dr. Vital, "belong to about twenty species and these to two families, Crotalidæ and Elapidæ. The family of the Crotalidæ is without doubt the more important, because it includes almost all the species the bites of which are either serious or fatal. The Crotalidæ belong to the sub-order of Soleno-

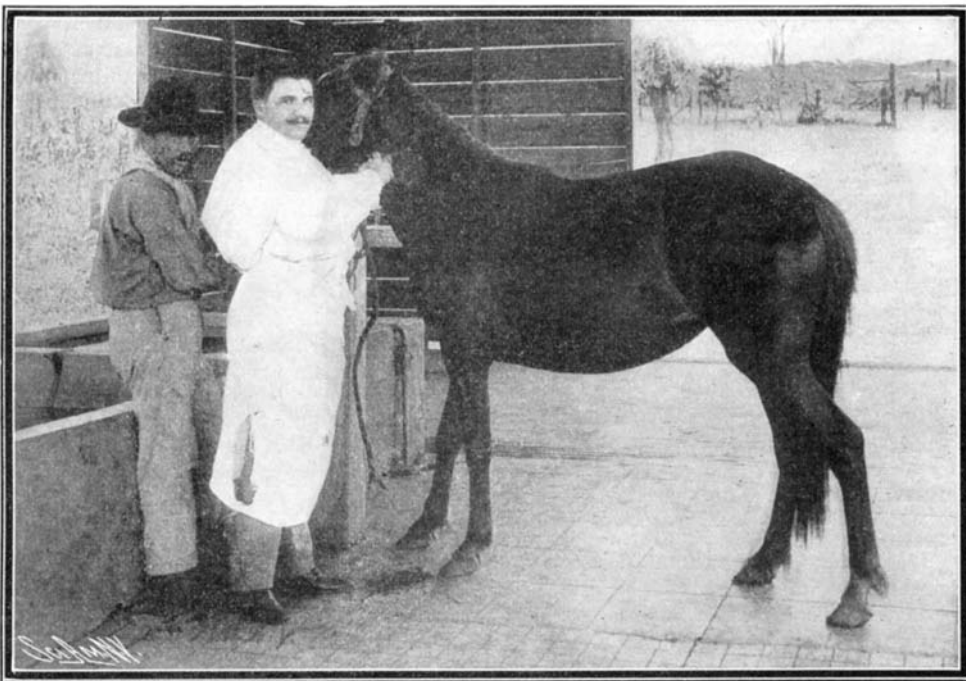
son extracted from rattlesnakes is a dense and milky liquid, slightly acid and white when dry, while the poison from lachesis is yellow. "The quantity furnished (to make a somewhat free translation from articles published by Dr. Vital in the Revista Medica de Sao Paulo) depends, among other circumstances, on these three principally—the size of the snake, its physiological condition, and the period of inertia or the time elapsed since it last bit. As to the first, we find what we would expect, that the larger the snake the better developed are its poison glands; as to the second, when the serpent is sick, the quantity of poison diminishes or disappears entirely, and as to the third point, experience has shown that at least ten or fifteen days are necessary for the production of a normal quantity of poison. The amount of poison varies, moreover, from time to time, but the average has been found to be about 0.04 grammes of dry poison or nearly four times that weight of liquid.



EXTERIOR OF MOSQUITO-PROOF BARN.



TEMPORARY HOSPITAL WHERE SERUM IS PREPARED.



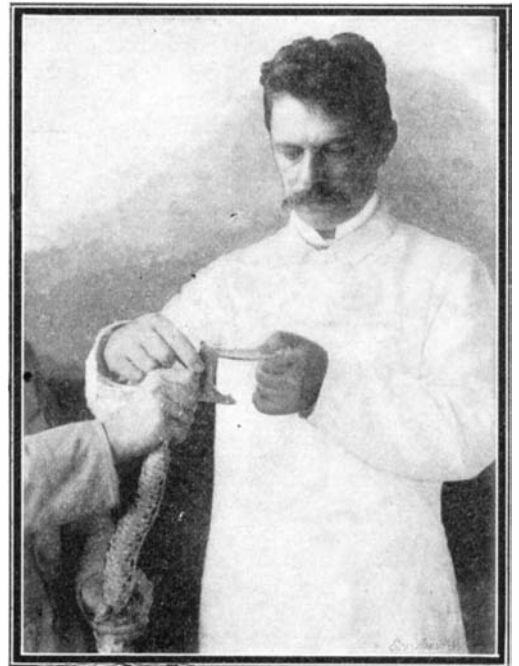
INJECTING THE POISON INTO THE VEINS OF A HORSE.

The Institute is about four miles away from the city, on a hill, with commanding view and plenty of pure air. The residence of Dr. Vital, the laboratory, the barns where the horses and mules are kept which furnish the serum, and numerous cages for rabbits and snakes, form the plant. The laboratory is as yet temporary. One of the barns is completely mosquito-proof and here are kept the animals which furnish the antibubonic serum. The second barn is for animals immune against snake bites.

This brings us to the second class of results obtained. Dr. Vital has been studying for years the snakes of Brazil, and influenced not only by scientific reasons but by humanitarian motives, has made a special study of snake bites and their antidotes. From two to three thousand people, it is estimated, die an-

glyphs. In the anterior part of the upper maxillary there is, on each side, a tooth much larger than the others, curved and capable of movement, which is the poison fang. It is jointed to the upper maxillary in such a way that it lies against the roof of the mouth when the snake is in repose, but when in the act of biting it assumes a vertical position. The tooth has a canal which leads from the poison gland to an oval opening near the end of the tooth.

The learned naturalist George Albert Boulenger, of the British Museum, classifies the Brazilian Crotalidæ in two genera, the genus *lachesis* and the genus *crotalus*, and the only species of *crotalus* is the *Crotalus horridus* or rattlesnake. This is abundant both in the northern and southern parts of Brazil." The poi-



FORCING OUT THE SNAKE POISON ON A WATCH CRYSTAL BY PRESSING ON THE POISON-SECRETING GLANDS.



GRIPPING THE SNAKE.

Dr. Vital says that the poison from rattlesnakes is much more virulent than that of other species that he studied, but that the manner of introducing the poison has great influence on the rapidity with which it takes effect. Introduced in the veins, all poisons take effect much more quickly than when injected hypodermically.

Various other scientists have studied not only means of cure, but means of rendering animals and persons immune. Sewall in 1887, Kaufman in 1889, Calmette, Physalix and Bertrand in 1894 succeeded in making small animals immune by repeated injections of very small doses of poison. The brilliant study of Behring, Kitasato, and Roux of the preventive and curative properties of the serum from animals immune to diphtheritic toxine opened new horizons to experiment.

As a matter of fact, the verification of identical properties in the serum of animals immune against snake poison was made almost at the same time by Calmette, Physalix, and Berthand, these experimenters arriving at the conclusion that it was possible to obtain a serum sufficiently active against snake poisoning by following a process analogous in the preparation of the animals which furnished the serum. Calmette makes the animals immune by injecting continually increasing doses of poison with continually decreasing doses of hypochlorite of calcium. Dr. Vital does not use hypochlorite nor any substance which neutralizes the effect of the poison, but commencing with infinitely small doses of the poison in a salt solution of 7 to 1,000 succeeds, in the course of a year, in rendering animals not only immune, but capable of receiving, at one time, doses of poison that would kill one hundred animals of equal weight. One of the illustrations shows a horse that has been made immune in this way and is now receiving 100 milligrammes a day.

While repeating the experiments of Calmette and while using his serum, Dr. Vital found it to be ineffective, much to his surprise, and on further experiment, made the important discovery that there are two classes of snake poison, the bothropic and the crotalic, the first belonging to the genus *Lachesis* and the second to the genus *Crotalus*. With these he made two types of serum, the anti-bothropic and the anticrotalic, each of which is effective only in bites of snakes of the same class as that which produced the serum. This important discovery explained, therefore, the ineffectiveness of the serum of Calmette which is taken from animals made immune by poison from snakes of India. In order to produce a serum of universal efficacy, Dr. Vital mixes equal parts of the other two serums and calls it anti-ophidic. The animals which furnish the serum receive injections of poison every other day in the manner shown by the illustration, and the extraction of the serum is made twice a month, 3,600 grammes of blood being drawn each time. The horses and mules, of which there are eighteen for pest and twelve for snake serum, are kept solely for this purpose and are not used otherwise. The serum is separated from the coagulum by a process invented by Dr. Vital, a process by which the quantity is much larger than in the ordinary processes of separation.

The efficiency of the serum has been proved repeatedly on animals in experiments, some of which the writer has witnessed. Side by side with a rabbit that died in forty-five seconds was another that received a mixture of a quantity of poison equal to that used in the first instance and the proper amount of serum. This rabbit showed no effects. One dove received enough poison to kill it in about an hour and another an equal amount, but soon after the proper amount of serum. The first died and the second lived. An infinite number of similar experiments have been made, always with results almost mathematical in their accuracy. Besides these experiments, Dr. Vital has now a history of persons bitten in which the serum has been successfully applied.

A great figure in the press world of Paris has passed away, according to the Westminster Gazette, in the person of M. Hippolyte Marinoni. He was the inventor of the printing presses which bear his name. As a lad, he was of a mechanical turn. His parents apprenticed him to an engineer in the Rue d'Assas. He brought out the first flat-bed four-cylinder printing machine, and later, in 1872, his celebrated rotary. Meanwhile he had become manager of the Petit Journal, of which the editor at that time was the distinguished publicist Emile de Girardin. The great success of the Petit Journal was due to the "Marinonis," which printed, folded, and cut the papers at the rate of forty thousand an hour. Then a color printing machine was invented by M. Marinoni and thus the well-known illustrated supplement of the Petit Journal became possible. M. Marinoni was of the thorough type of self-made man—a little rough externally, but with a heart of steel.

THE MOUNT PILATUS RAILWAY, SWITZERLAND.

BY EMILE GUARINI.

Notwithstanding that there are few assertions that can be made without fear of contradiction, there is one nevertheless that is undeniable and undenied, although the beautiful may be what pleases and its conception may consequently vary with taste, and that is that Switzerland is a beautiful and picturesque country. This is not the opinion of the Swiss alone, who are proud of their lakes and mountains, but of the tourists who come annually from all parts of the world to visit the country. Every one finds it beautiful because every one finds in it what pleases and interests him, and this includes the technical man, as well as the artist, the geologist, the botanist, the man of active life who comes to obtain rest, and the person of leisure who comes because it is the fashion.

Among the innumerable sites that are annually visited by the tourists who travel in Switzerland, Lucerne, that classical resort of foreigners, is, with its lake and remarkable surroundings, assuredly the most picturesque. But, just as one cannot claim to have seen Switzerland without having made the ascent of some one or other of its mountains, just so he cannot

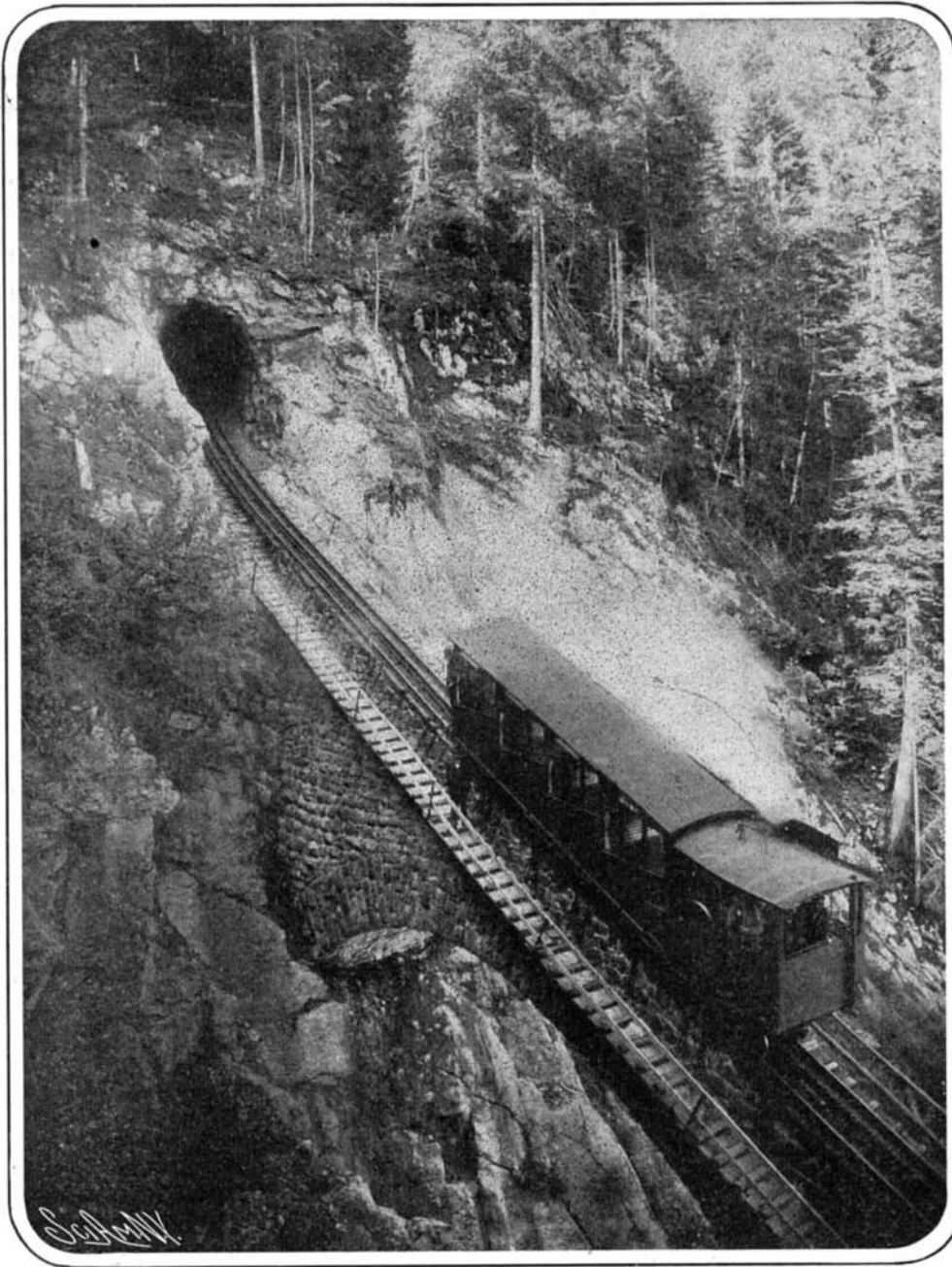
Alpnach-Staad and ended at the summit. It is this footpath that the Mount Pilatus railway follows for quite a long distance. But, while the modest footpath accommodates itself to all the capricious meanderings of the slope, the railway goes straight to the top, boldly crossing narrow passes and ravines, and traversing walls of rock that seem to bar its passage.

When the tourist leaves his conveyance at Alpnach-Staad, he finds himself at the lower station of the rack railway that runs to the summit. He is then at about 1,450 feet above the level of the sea. The car is there, inclined upon the track, the gradient of which is already 36 per cent. The locomotive and the car form a single vehicle. The car is divided into four compartments, placed one above another, and each accommodating 8 passengers. Its lower part is occupied by a water tank having a capacity of 100 gallons. The axles are arranged in such a way that curves of very small radius may be taken despite the distance apart of the axles, viz., 20 feet. Four pairs of cog wheels, two in front and two behind, serve for the propulsion, running, and braking of the vehicle. Rings that embrace the head of the rails prevent the car from being blown from the track in a gale or from

running off because of ice or snow that may exist upon the roadbed. The boiler, which is of the tubular type, is 6 feet in length, has a heating surface of 225 square feet, and employs a working pressure of 12 atmospheres. It is placed at right angles with the axis of the track, in order to prevent the various gradients from producing fluctuations in the level of the water. The average gradient is 38.1 per cent; the minimum, 19.2 per cent; and the maximum 48 per cent. The engine cylinders are 8.75 inches in diameter, and the piston stroke is 12 inches. The normal speed of the trip is a little over three feet a second. The dead weight is 9.6 tons, and the load with 32 passengers, 2.4 tons. The locomotive is of about 70 horse-power. The braking arrangement has naturally been very carefully looked after. It consists of a compressed-air brake, an automatic brake, and two friction brakes. The suspension of the vehicle is assured by a system of four pairs of elliptic springs combined with spiral ones. The play of the car is prevented by safety stops, so that the vibrations are no greater than they are in an ordinary well-suspended train.

Such, then, is the singular, but powerful engine, constructed by the Winterthur locomotive works of Switzerland, that daily traverses the 5,400 feet which separate the Alpnach-Staad station from that of Pilatus-Kulm, which is at an altitude of 6,800 feet. This altitude is reached by means of a track of 15,150 feet in length, constructed by MM. Lacher and Guyer-Freuber, of Zurich. From the edge of the lake to the top of the mountain, the substructure consists of solid masonry covered with large granite flagstones. The track itself, which is all of iron and steel, is solidly riveted, once in every three feet, to the underlying masonry. The bed for the rack is placed between the

two rails, which it slightly exceeds in height. Attached to each side of it is a steel rack with which engage horizontally, on the right and left, the four cog wheels of the vehicle. Numerous bridges had to be constructed under most difficult conditions, and yet, in spite of that, the Pilatus railway, its rolling stock, stations, and shops, cost but \$380,000 and took but four hundred days to finish. The track in the first place traverses plains bestrewn with wooden buildings, and then reaches the gorge of Wolfort, at an elevation of 2,950 feet, which it crosses by means of a bridge constructed with surprising boldness. This bridge, which is entirely of dressed stone, is within the radius of 260 feet uniformly adopted for the curves of the track. Its span is 75 feet. The railway afterward enters Wolfort tunnel, 145 feet in length, and then climbs the Risleten, the gradient of which is 48 per cent. In order to cross this critical place, it became necessary to employ a number of hurdles and piles, and to construct subterranean vaults, as well as huge sustaining walls. Continuing the ascent, the tourist reaches a wild region intersected by the two Spycher tunnels, 167 and 318 feet in length. Upon leaving the upper tunnel after a magnificent view of



The Car on its Journey Through Wolfort Gorge.

THE MOUNT PILATUS RAILWAY.

say that he has seen Lucerne unless he has ascended Pilatus, which, of all the mountains of Switzerland, is the most celebrated by the writings of which it has been the object, by the splendid panorama there unfolded to view, by the sea of fog that is sometimes seen forming there, by the magnificent spectacle presented to the spectator when he is on the top of the mountain, by the terrible legend of the damnation of Pontius Pilate, and, finally, by its meteorological legend, which has it that when clouds occupy the summit it is a sign of fine weather, and, when they are situated half way up, it is a sign of rain, a fact expressed in the country by the following archaic stanza:

"Quand Pilate a son chapeau,
Dans le pays il fait beau;
Mais quand il ceint son épé,
Gare l'ondée."

Formerly, when the ascent of Pilatus was made (an event that for centuries could not take place without a special permit for fear that the visitor might disturb the soul of Pilate and let loose a scourge upon the country, but in reality because certain lakes had for a long time been the refuge of a pagan cult), it was made by following a steep footpath that started from

the lake Quatre Cantons and the Righi, the traveler leaves the forest region and reaches Aemsigenalp at an altitude of 4,590 feet, a charming place provided with an inn and a small wooden structure containing two pumps of small size, but great power, which furnish drinking water to the two hotels situated at about 2,300 feet higher up in a rocky and arid region. The train, after taking a supply of water for the second time, traverses one of the most pleasing regions of Mount Pilatus, and then reaches the huge and fantastic blocks of the Mattalp, whence the view embraces a magnificent panorama of the Matterhorn, the enormous mass of the Esel, and the ridge that connects these summits. The railway then reaches the region of bare rock, describes a curve toward a point of the southeast ridge, and then climbs the wild escarpment of the wall of the Esel. It is difficult to imagine a bolder direction line. At an altitude of about 6,230 feet, four tunnels of 144, 180, 148, and 36 feet here and there pierce the colossal mountain sides. Between the two upper tunnels, there unfolds the panorama of the Bernese Alps. The railway then begins its last climb up a 48 per cent grade, and reaches the Pilatus-Kulm station at about 6,800 feet altitude. The mountain falls perpendicularly upon the charming country of Lucerne, beyond which we discover a vast extent of hills and valleys strewn with blue lakes, cities, and villages, and numerous rivers which, between the low eminences, shine like threads of silver. There are two hotels to receive the tourist, who, from their terraces, obtains a magnificent view over the lake of Quatre Cantons, which appears in such splendor that one does not know what to admire the most, the dark azure of its waters, or the variety of the sinuosities that they form. In order to complete the attraction of Mount Pilatus, the railway company has undertaken the construction of the road which is the most singular in Europe, and that is the Tomlishorn road running from one of the hotels to the peak of the Tomlishorn along the most abrupt of the walls of rock, and ending at a platform whence may be enjoyed a scene such as Switzerland alone is capable of presenting.

But here we are far from the railway, about which we have not much further to say, however, unless it be to speak of the intrepidity of the Italian laborers, who, sometimes suspended by ropes along perpendicular walls of several hundred feet in height, were employed in the construction of the railway, and, finally, to give the number of the travelers furnished by the last annual statistics and which amounted to a total of 44,231, 520 of whom were Americans and 12,011 English. The success of the road is easily explained. The traveler who is not very familiar with mountainous countries and with ascents finds himself here carried gently and without fatigue to the summit of one of the most celebrated mountains of Switzerland, and preserves a deep impression and lasting remembrance of the spectacle that unfolded under his eyes and of the gigantic work that permitted him to see it and that attests both the genius of man and of nature.

THE MERCURY VAPOR LAMP FOR PHOTOGRAPHIC WORK.

(Continued from page 108.)

The illustration, Fig. 2, shows the frame lowered to the floor and being used as a printing lamp. Mr. Pratt states that he has made sittings at night with this equipment in the astonishing space of one second. The prints are made with the same light in from 2½ to 10 seconds, according to the density of the negative, and the light only barely heats the negative, but not enough to damage it in the least. These lamps are constructed of glass tubes having metal sealing-in wires at each end. These wires lead the current to the electrodes, one of which is of mercury, and the tubes are exhausted to a high degree by means of a vacuum pump and sealed off, preventing any escape of the vapor which fills the tube.

It is claimed that these mercury vapor lamps produce the most efficient electric light known, the current consumption being about 0.4 watts per spherical candle and, under favorable circumstances, it is stated as low as 0.3 watts per candle-power. Three ordinary 32-candle-power incandescent lamps required as much current as a mercury vapor lamp of 750 candle-power and the efficiency is therefore more than seven times that of the incandescent lamp and about double that of the arc lamp.

As the vapor is inclosed under a vacuum there is no consumption of the light-giving element and, therefore, this type of lamp requires no trimming.

The mercury vapor lamp produces a light which is seemingly pure white, but is entirely lacking in red rays or nearly so, thus making it entirely unsuitable where the accurate determination of color values is necessary. The mercury vapor lamp operates with absolute steadiness and without noise and is said to be the most desirable form of light for factories, machine shops, and work-rooms of architects and draftsmen, as well as for all classes of photographic work.

The light of this lamp is composed to a very large

extent of chemically active or actinic rays and is, therefore, a perfect substitute for daylight for all sorts of photographic processes. By the use of this lamp the studio for portrait photography may be located in any part of a building and the operator is entirely independent of weather conditions. The photographer can devote his attention entirely to the artistic arrangement of lights and shadows, as the time of exposure is constant at all times. The same equipment for the mercury-lamp skylight can be utilized for printing of all kinds with great satisfaction. The mercury lamp is of such shape that it is particularly well adapted for mechanical blue-printing with glass cylinders and revolving drums being, it is claimed, many times more efficient than the focusing arc lamp, while for photo-engraving work lamps of this type consuming eight amperes are said to do the work more quickly than arc lamps taking three times this amount of current.

Correspondence.

Ground Corn.

To the Editor of the SCIENTIFIC AMERICAN:

I beg leave to take exception to the statement made in the SCIENTIFIC AMERICAN of to-day by Mr. A. W. Dennis, that corn ground by steam will heat, whereas, if ground by water power, it will not. I know, from several years' experience as a practical miller, that damp grain ground by water power will heat if left in large bulk or even in as small a receptacle as a flour barrel, and that large bins full of meal from dry corn are safe even if ground by steam.

Worcester, Mass., July 30, 1904. W. H. DELONG.

Corn Grinding.

To the Editor of the SCIENTIFIC AMERICAN:

I noticed, in reading the article of Albert W. Dennis, on page 78 of the July 30 number of the SCIENTIFIC AMERICAN, the statement that corn ground in a grist mill that is run by steam will generate so much heat within itself, or acquire the heat in some way from the machinery, that it will burn and spoil if left in large bulk after being ground, but that corn ground in a mill operated by water will not heat itself or be affected in this way.

Mr. Dennis has been misinformed. The facts are these: Corn ground on a stone operated by water will heat and spoil just as quickly as a mill operated by steam power, and meal ground under the same conditions by water or steam will heat, if piled up, until after the grinding heat is out, then it is not safe to leave a very large amount piled up longer than a few days at a time. Meal ground on a dull stone will heat quicker than meal ground on a sharp stone. The kind of power does not make any difference with the heating of the meal, as any miller can tell him.

Macedon, N. Y., August 2, 1904. EDWIN YOUNGS.

Pressmen and Electricity.

To the Editor of the SCIENTIFIC AMERICAN:

I have read the article of Mr. A. W. Dennis, of Salem, Mass., on "Are Pressmen Affected by Electricity from a Belt?" and was much interested. I would be very glad to give him my experience and observations.

The kind of electricity spoken of is static or frictional and is the same as lightning. It is generated by the friction of two unlike non-conducting substances. Its cause in this case is the friction of the belts and pulleys, and it exists as a charge on the surface of the belt.

By consulting a standard work on electro-therapeutics, we find that static electricity is used much in treating nervous affections and that it requires care and skill to apply it so that the effects will not be injurious. There is no doubt that this treatment is beneficial to the nervous system when it is applied correctly, with reference to quality and quantity. The charge from a belt is irregular and varies constantly and we find that electricity applied in this manner injures the nervous forces. A person when subjected to the influence of a current or series of discharges for any length of time becomes numb and his breathing and pulse slow down considerably, even if the current is so mild as to cause no annoyance.

Once I had an opportunity to remedy a case of this kind in an electrical plant. The main shaft was driven by two wide belts and anyone passing near them invariably received a severe shock, which was a constant inconvenience. This discharge may be effectively prevented by running wires from any water or gas pipes in the building and fastening the ends near the belt, or they may be allowed to touch the belt. This allows a path for the discharge and proves an effective remedy.

With reference to steam and water ground corn meal, it is my impression that the difference in quality depends upon the speed in each case, which necessarily governs the friction. The machinery of a

steam mill runs so fast that more heat is generated in the grain, which "kills" the grain, as millers say. On the other hand a water-driven mill operates at a lower speed and the quantity of heat generated is less. It all depends upon the speed.

Danbury, N. C.

J. FRANK MARTIN.

Electricity and Lathe Work.

To the Editor of the SCIENTIFIC AMERICAN:

In reply to the interesting letter from Mr. Albert W. Dennis, published in a recent number of the SCIENTIFIC AMERICAN, I take the liberty of imparting the following bit of information:

While engaged in the manufacture of certain staple articles, about eight years ago, I had occasion to do considerable lathe work. The lathe upon which I worked had a twisted belt which was always strangely charged with static electricity, so much so in fact, that tufts of dust would cling to the leather. The belt would readily suck the oil from a spoon and wire-draw it into hair-like strings which would encircle the belt. Before this experience I had been a sufferer to a marked degree from nervousness or excessive nerve tension, but soon after I began my lathe work I felt a change for the better, though, I must admit, accompanied by a slight falling off in muscular vim. During the past year I found that after using a large Holtz static generator, with which to carry on experiments, considerable ozone was liberated. The gas would fill the room in a short time, so that my health became powerfully affected, causing pains in the thorax, and general distress, which fresh air seemed to relieve. If there are frequent discharges from Mr. Dennis' belts it is quite probable that a man working near them would in time become affected. More ventilation would be needed in the press-room, or else the press itself should be grounded. While the presence of an excess of ozone in the air, owing to its superiority to oxygen, may cause undue nervous tension and a subsequent reaction, I believe that a nervous system of ordinary tone would in time become affected and finally succumb, because of a continued form of electro-catalytic action on the highly sensitive animal tissue.

ALBERT F. SHORE.

Brooklyn, N. Y., July 30, 1904.

Mosquito Extermination Again.

To the Editor of the SCIENTIFIC AMERICAN:

In a letter published in your correspondence column recently I find the following:

"No doubt if the malarial mosquito could be exterminated there would be an end to the propagation of malaria through this means, but it is not claimed, I understand, that the mosquito can, of itself, propagate the disease. It must first have had access to an infected person."

The mosquito theory as outlined above is an unproved hypothesis. It is true that the plague of mosquitoes was minimized by kerosene distribution in their breeding places, at Havana, and that yellow fever did not appear that season. But neither did it visit Santiago, Cuba, where the mosquitoes ran riot as usual. In Italy, when the "mosquito theory" started, the malarial insect was found abundantly, but no malaria existed, or *vice versa*. But, granting that there is some foundation for the theory of infection, it is evident that the insect procures its poison from the water where it was born, principally wet regions and shallow wells. If a microscopic quantity of poison from mosquito bites can produce malarial fever what must the ravage be when the polluted water is used, in large quantities, for drinking purposes?

In my opinion there is no such thing as malaria (bad air), in any habitable place. It is malaqua, not malaria, that causes the fever. I have known men and women to dwell in swamp regions, traditionally unhealthy, and maintain superb health simply by drinking pure artesian water and avoiding shallow well water. The Roman fever, in Italy, has practically vanished from the Eternal City since the establishment of new water supplies. Still blows the air of the Campagna upon Rome, but it brings no fever on its wings.

Killing, exterminating mosquitoes is a desirable thing for human comfort, but if every mosquito on earth were slain, the "malarial" (so-called) fever would continue as long as people drank polluted water and contaminated milk.

The "malarial" superstition dies hard, but it has not the potency it once possessed. Once the human mind generally understands that malaqua and not malaria is the enemy, the mosquito plays a very small fiddle in this problem.

JAMES R. RANDALL.

Augusta, Ga., August 1, 1904.

About 8,400,000 gallons of water are evaporated daily from the salt ponds in Utah when the pumps are operated ten hours a day during June and July. In August the salt harvest begins, and the yield is at the rate of 150 tons per inch per acre. Utah produces annually nearly 60,000 tons of salt.

SPEED TRIAL OF THE BATTLESHIP "OHIO."

The battleship "Ohio," built by the Union Iron Works of San Francisco, received her speed trial at Santa Barbara, California, on Saturday, the 30th of July. Her actual record fell slightly below the requirements of an 18-knot speed, but it is thought probable that when allowances have been made for the tide it will be found that she made fully 18 knots and maybe a trifle more. The course lay from the Santa Barbara Lighthouse to a stake-boat 36 miles up the coast, and return. On the first leg of the course the "Ohio" fully met requirements, rounding the stake-boat with half a minute in her favor, but on the return both wind and tide were against her, and she lost a minute and a half. The trial was attended by Rear Admiral Whiting, who was the government's representative on board, and the builders were represented by Capt. Forsythe. The "Ohio" will probably be given another trial soon, when she is expected to make a better showing.

The battleship "Ohio" is one of the three powerful battleships of the "Maine" class, authorized by Congress on May 4, 1898. Although she was the first of her class to be launched (in May, 1901), she fell behind her sister ships the "Maine" and the "Missouri," which are both in commission, the former since December, 1902. The contract date of completion of the "Ohio" was originally set for June 5, 1901, so that she is over three years behind her contract.

The addition of the "Ohio" to our navy will greatly strengthen our position in the Pacific, for she belongs to the most powerful class of battleships we possess. It will be recalled that it was at first proposed to build these vessels on plans very similar to the "Alabama" class of battleships, which have a speed of about 16 knots per hour, or at least two knots below the average speed of foreign battleships. Owing to the storm of protest aroused by this proposition, it was decided to increase the speed of these vessels to 18 knots. Increased speed required the addition of twenty feet amidships to allow for the increased motive power necessary. This also made room for two more 6-inch guns in the broadside battery, and a larger coal capacity. The "Ohio" has a length of 388 feet, and a beam of 72 feet 3 inches, with a draft of 25 feet 6 inches. Her displacement when fully equipped for service and carrying her normal supply of 1,000 tons of coal will be 12,500 tons, and her full load displacement will be 13,941 tons. The normal displacement of the "Maine" is 12,300 tons, and of the "Missouri" 12,240 tons. The "Ohio," like the "Missouri," is equipped with Thornycroft boilers and twin-screw vertical triple-expansion engines. The "Maine," it will be recalled, is fitted with Niclausse boilers. The main armament of the "Ohio" consists of four 12-inch guns and sixteen 6-inch guns, and she is equipped with two submerged torpedo tubes.

The armor of the "Ohio" consists of a water-line belt of Krupp steel, 11 inches thick at the top and 7½ inches at the bottom. The turrets containing the 12-inch guns have a thickness of 12 inches, and the 6-inch guns are protected by 8-inch armor. The protective deck is covered with 3-inch plate forward and 4-inch plate aft. All the joiner work above the protective deck is of fire-

proofed wood, and, whenever possible, light metal is used for gangways, bridges, and the like, so as to make the vessel thoroughly fireproof. The "Ohio" will have a complement of 699 officers and men.

STRANGE SIGHTS IN THE FAR NORTH.

BY ARTHUR INKERSLEY.

The long winter, the short summer, and the extreme cold are the conditions which are responsible

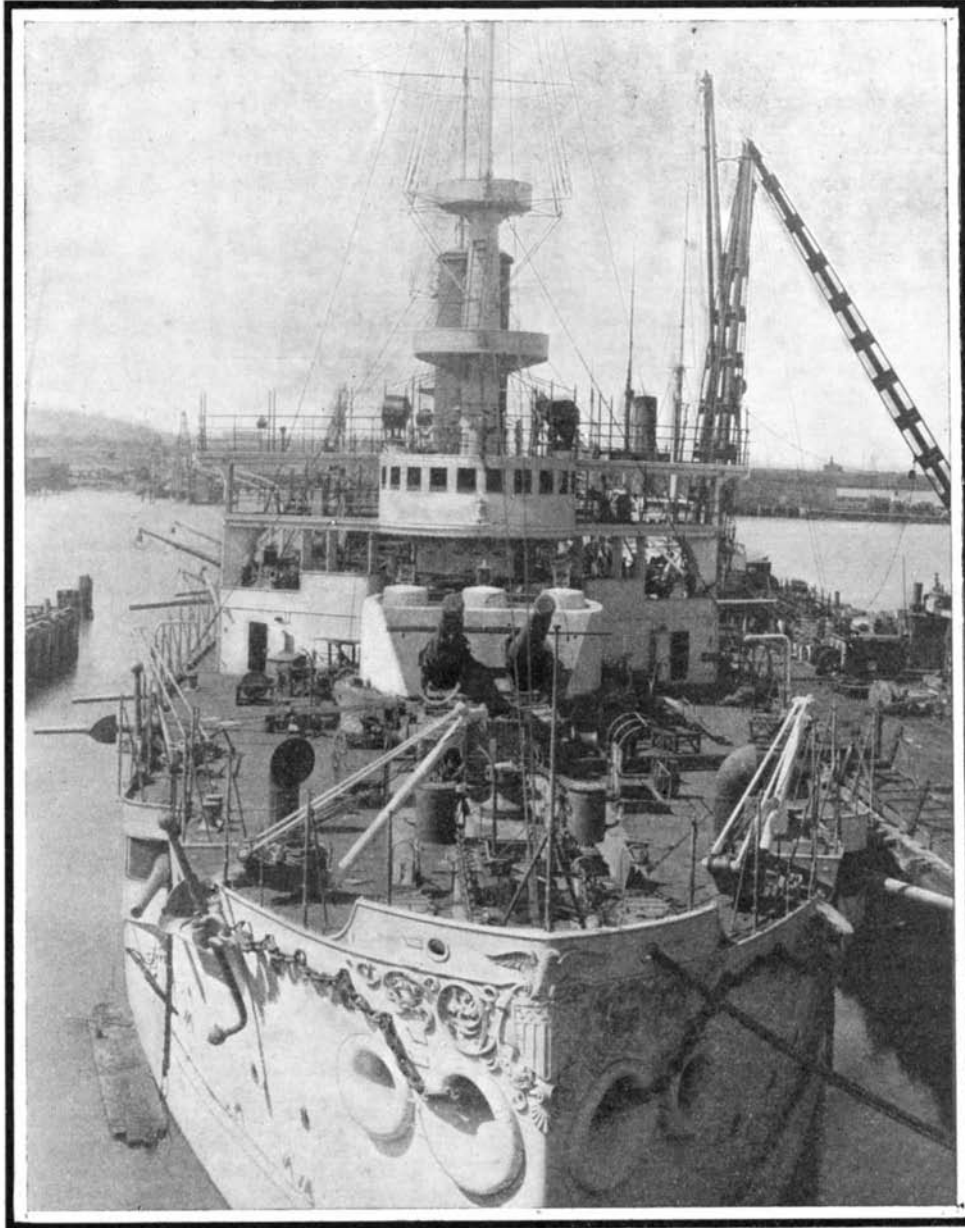
many places, and in others to a depth of two feet below the surface, he strikes ground that is frozen solid and that remains so both summer and winter. Heat must be applied to soften the frozen ground before the digger can work it. "Burning down" through the frozen ground has been practiced for a long time in the gold fields of Siberia, where similar conditions exist. The process is conducted as follows: Over the prospect shaft, which generally measures three or

four feet by six feet, a wood fire is made, the heat of which melts the soil to a depth of a few inches, or sometimes of a foot or more. The softened earth is shoveled out, another fire is built, and the operation is repeated until the gold-bearing stratum is removed. The fact that the material dug out of the pit must be hoisted to the surface by a bucket and windlass renders the process of sinking a shaft so slow and tedious that it taxes to the very utmost the patience and endurance of the most industrious miner. The better half of a season may be spent in "burning down" two or three prospect holes. The work is done chiefly during the winter, and the vertical prospect shafts are often united by lateral burning and picking. Not only is the work of tunneling through the frozen ground hard and tiresome, but the eager gold-seeker runs the risk of perishing, like a rat in a hole, from asphyxiation by the noxious gases generated in the process of burning. Many attempts have been made to devise a better method than wood-burning, the most successful of them being to thaw the ground by steam.

The first prospect in what seems to be a likely location is made with the gold-pan. If "colors" appear at first in small quantity and increase as bed-rock is approached, the prospector generally decides to take up the location. If a pan of the gravel when washed shows a few cents of gold, the claim is likely to turn out a valuable one. To use a gold pan properly requires some skill, the slow, rotary movement which produces the best results being very tiring to the wrist; while the rough motion adopted by some miners, either through inexperience or from a desire to make the work less

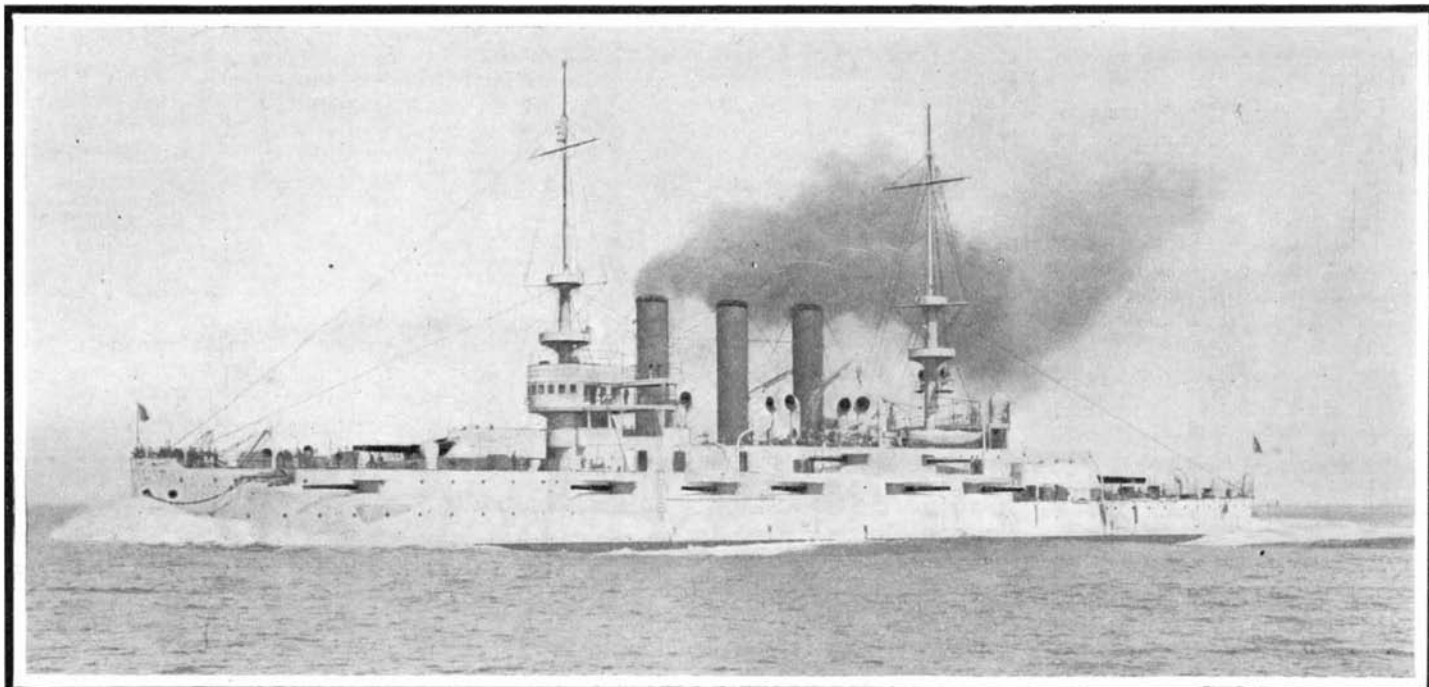
fatiguing, causes the loss of some of the gold, which escapes in the washing.

The miners, while digging prospect-holes in the Klondike region, have found from time to time bones which indicate that the animals inhabiting the Yukon region in prehistoric times were very different from those living there at the present day. In some of the creeks in the Klondike region great ivory tusks, evidently from an animal similar to the elephant or mastodon, have been discovered. The tusks vary in length from three to eight feet, some of the largest being ten to twelve inches thick. Though these remains are interesting scientifically, they are of no commercial value except as curiosities, the ivory having turned yellow from age and the long, severe frosts having cracked it so badly that it is of no use in the arts. These tusks are always found close to bed-rock, buried beneath the frozen gravel at a depth of ten to sixty feet. The miners bring them up to adorn their cabins. The tusks are much curved and on the under side are worn away, giving the impression that the great animals to whom they belonged fed on moss or s w a m p •

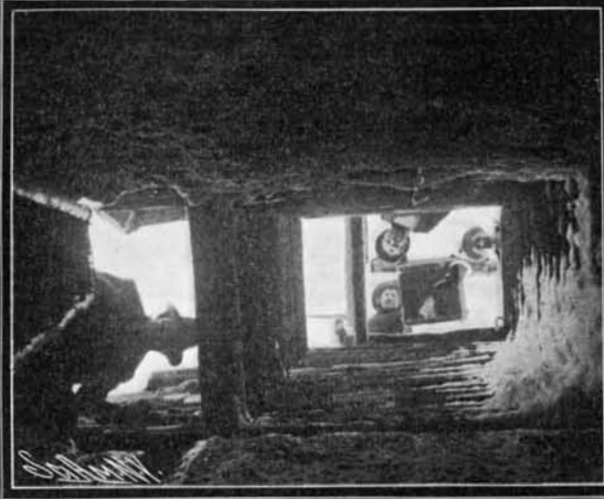


DECK OF THE "OHIO."

for most of the strange things to be seen in the Klondike. In temperate or hot countries the process of extracting gold from a placer deposit is extremely simple—if the gold is there. A pick, a shovel, and a pan or rocker are all the implements the gold-digger needs on an Australian, South African, or Californian gold field, and, if the nuggets are large enough to be taken out by hand, the first two will suffice. But in the gold-bearing region of Alaska and the Northwest Territories, the extraction of alluvial gold is by no means so easy a process. Most of the placer deposits in that ice-bound region are in a frozen condition, and it is this fact that makes the extraction of the yellow metal there, as in Siberia, so laborious. After the miner has dug down to the depth of only one foot in



THE "OHIO" MAKING SEVENTEEN AND THREE-QUARTER KNOTS.



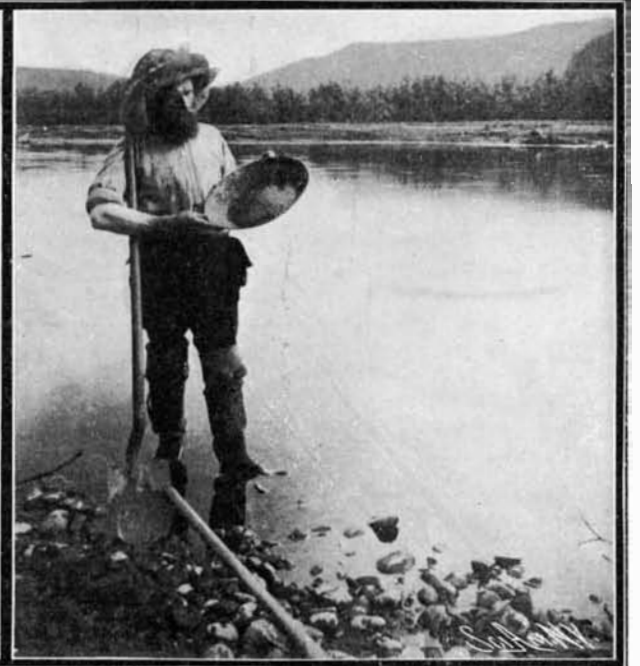
A Glimpse Down The Shaft.



"Burning-in" with a Wood Fire.



Team of Malamute Dogs and U. S. Mail Carrier on the Frozen River Yukon.



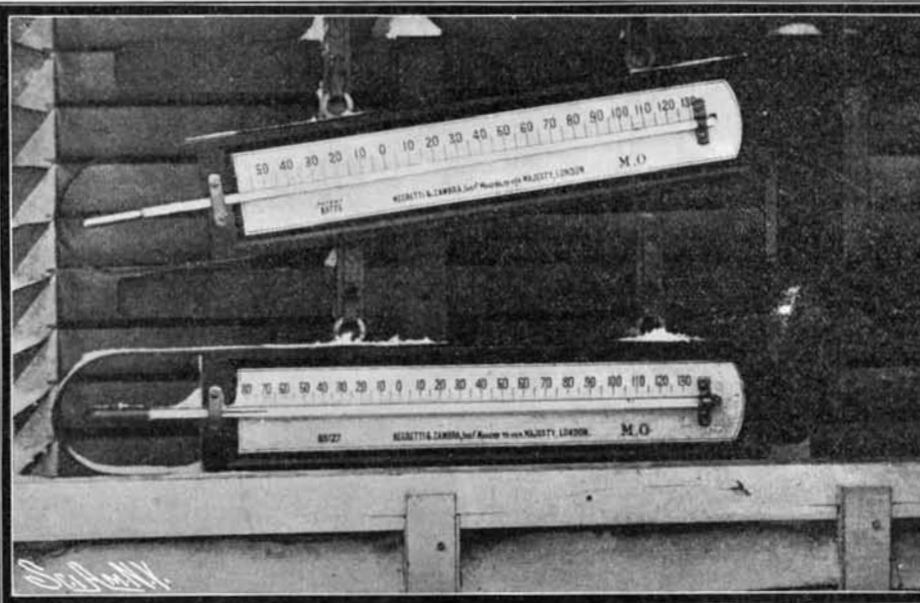
Panning Out.



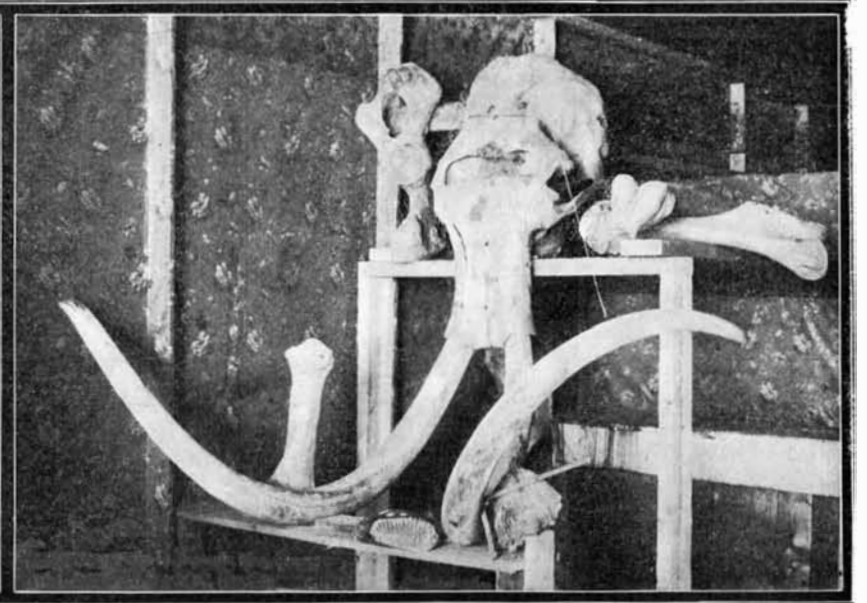
"Mushing."



Prospector and His Pack Dogs.



Thermometer Registering 68 Degrees Below Zero.



Remains of a Mammoth's Skeleton.

Photos by G. G. Cantwell.

STRANGE SIGHTS IN THE FAR NORTH.

grass and that the tusks slid along the surface in front of them as they moved. The mammoth remains shown in the photograph were found in the bottom of a mining shaft, 55 feet deep, on the Hunter Creek.

During the winter, when the river is closed to navigation, the native dogs of Alaska and the Northwest Territories furnish the principal means of travel. By the aid of teams of dogs harnessed to sleds, prospectors, mail-carriers, and others have accomplished long journeys that would have been impossible without them. In the fall, when the frost has begun to bind land and water in its icy grip, the gold seekers start in to carry their winter supplies up to the mines, and for this work dogs are indispensable. Teams of five, six, or more dogs are attached to sleds and draw heavy loads over the snow or the frozen surface of the rivers. During the summer the dogs generally have an idle time, but occasionally the miners, finding themselves short of some supplies, fasten pieces of sacking on the dogs' backs and load small packs on them. The weight of the pack varies according to the size and strength of the dog and may be as little as ten pounds or as great as forty to fifty pounds. The dogs pick their way through the swamps and among the rocks, showing by their carefulness that they are quite aware of the damage a bad fall might do to their packs. During the working season the dogs are fed on dried fish, the Indians near the mines doing quite a good business in summer catching salmon and drying it for use during the following winter. The price of salmon varies from about ten cents to a dollar per fish. A dog under ordinary circumstances eats two pounds of salmon per day, but if the fish cannot be obtained, is fed on bacon and rice cooked together, of which three to four pounds are required to feed him each day. It is the custom to feed the dogs only once during the twenty-four hours, and at night, as a dog, after he has been fed, becomes disinclined to work. Some few miners, kinder than the rest, give each dog a small piece of fish at noon, but most men feed them only at night, giving them all they can eat at that time.

Specially-constructed instruments are necessary to register the extremely low temperatures of winter in the Far North, the ordinary mercurial thermometer becoming useless at 40° deg. below zero, as the mercury freezes at that temperature. In the early days of Dawson the only trustworthy thermometers in the camp were the property of the captain of the Northwest Mounted Police at the barracks. They were manufactured especially for recording very low temperatures. The minimum temperature registered during the winter of 1897-8 was 72 deg. below zero in a rather exposed place on the Klondike River, where the cold is some degrees greater than in the city of Dawson. Only one of the two thermometers shown in the accompanying photograph is capable of registering the temperature of 68 deg. below zero shown by it. In the other the spirit, disgusted at the extremely low temperature, has retired into its bulb, not to emerge for business again until the temperature shall have had the decency to rise to 60 deg. or 55 deg. below zero. The photograph was taken in Dawson on January 15, 1901.

Clearing Out Space.

BY EDGAR L. LARKIN.

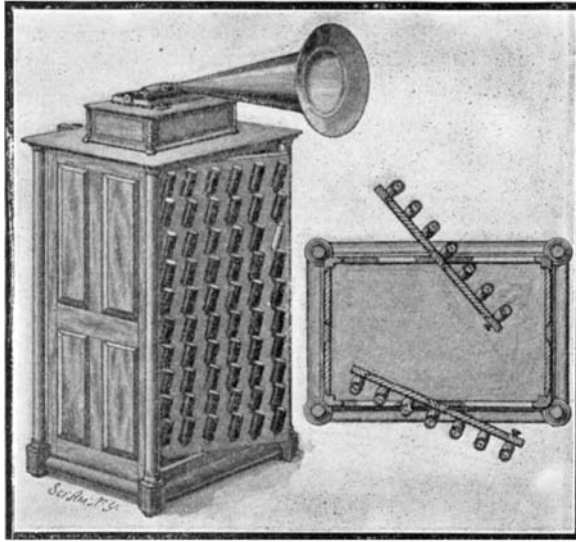
With a parallax of 0.021 sec. for the star Antares, as given by Sir David Gill, its distance in round numbers is one quadrillion miles. From photometric considerations, J. E. Gore, SCIENTIFIC AMERICAN SUPPLEMENT, No. 1474, page 23622, computes the mass to be 88,000 times that of our sun. An incredible quantity of matter must therefore have been drawn in from all adjacent space to build up its giant mass. This space should be, in the nature of the case, comparatively clear of matter. The fact is, that a wide region north of Antares, extending from northeast to northwest, for quite a distance, is about as void of stars as any known to the telescopist. With the 16-inch glass in this observatory, focal length 22 feet, and with a power of 200, many starless fields are encountered, and several with a wide eye-piece of power 132. These blackened and waste areas show no stars; or if any, they are at the extreme limit of vision in this splendid and pure mountain air. And in these dark expanses no trace of the delicate, pearl-white, shimmering background of the sidereal structure can be seen. Space is swept clean. The inference may be made that all the matter once in this wide area has been drawn in to build up the colossal sun Antares. And as that star is now in a region where there are others, a further deduction is possible, namely, that since formation, Antares has drifted southward. Sagittarius and Scorpio present many black fields without either star or the nebulous background which lies beyond the entire visible universe except in these dark openings, deeps, or caverns. There are at least one hundred starless fields in these constellations. One typical and most beautiful example is in right ascension, 18 h., and south declination 27 deg. 54 min. It is jet-black as seen here. The edges of the sidereal cistern are clear-cut,

as though dug in glittering sand. To the east is a circle of small stars, in an intensely rich region. A theory is possible that the cluster of stars formed where the cavity now is, and then moved toward the east. Whether the shining base, or substratum of the entire sidereal structure is made up of quadrillions of stars, or whether the whole universe is immersed in nebulous matter, may never be decided. But the marvelous object is always visible in its majestic splendor, when the moon is absent. All nature is enshrouded in a cloth of pearl, except where these rents appear.

Lowe Observatory, Echo Mountain, California.

CABINET FOR STORING PHONOGRAPH RECORDS.

Phonograph records being ordinarily made of wax, are very fragile and must be preserved with consider-

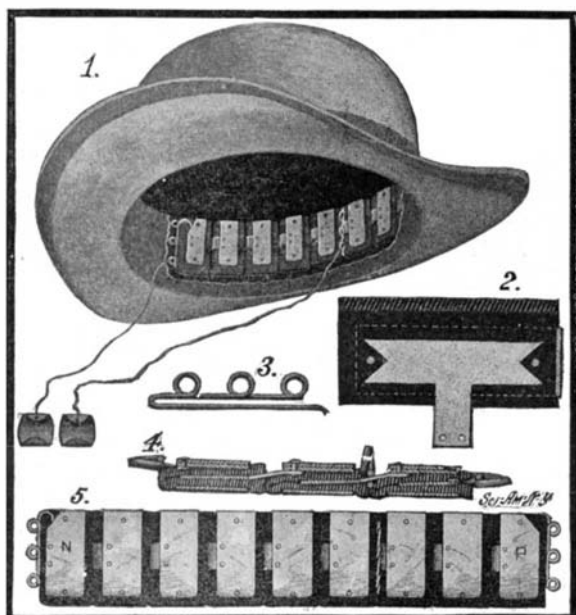


CABINET FOR STORING PHONOGRAPH RECORDS.

able care, and when many are to be provided for it becomes a matter of difficulty to do this and at the same time have them accessible for ready selection. We show herewith a cabinet invented by Mr. Edgar Krom, of 538 West 159th Street, New York city, which provides for the safe keeping of a large number of records. The cabinet is formed with two swinging doors pivoted centrally at the top and bottom. The inner face of each door is provided with a number of pins upwardly inclined, on which the records are supported. On the upper end of each pin is printed or written the name of the particular record thereon supported. The cabinet is preferably of such height as to furnish a convenient support for the phonograph. In use the cabinet will be preferably placed at sufficient distance from the walls of the room to permit swinging of either door upon its central pivots. When the doors are thus opened, all the pins and supported records may be seen, and any of the latter desired may be removed without disturbing the others. It will be seen that this cabinet provides for the storing of a great number of records in a comparatively small space, renders each freely accessible, and does away with any danger of injuring the one removed or those about it. At the same time it is comparatively inexpensive to construct, and furnishes an ornamental and convenient support for the instrument in connection with which the record is to be used.

MEDICAL BATTERY.

A convenient form of medical battery has recently been invented by George Francis Webb, M. D., of Geneva, Ohio, which may be conveniently carried about one's person. As an example of its convenient form we have shown the battery as carried within the sweat-band of a hat. The battery cells are each made up of a



MEDICAL BATTERY.

strip of felt or flannel folded over on itself and enveloping a copper plate which forms the negative element of the battery; the positive element consists of a U-shaped zinc band which is slipped over the felt strip. A strengthening plate, also of zinc, is fitted under the upper arm of the U-shaped band, and together the two zinc strips are securely riveted to the felt strip. The copper plate is formed with a projecting stem as shown in Fig. 2, and in connecting up the cells of the battery this is bent up and riveted to the upper arm of the next cell of the series. Instead of binding-posts at each end of the battery, the inventor uses wire clips such as that shown in Fig. 3. The wire is bent to a U-shape with loops formed on one of the arms. The straight arm is fitted between the felt and the copper or zinc plate as the case may be, and wires are attached to the loops which also serve as handles for readily manipulating the device. Electrodes of the form shown are secured to the ends of the wires. They are made of aluminium, the metal being frosted so as to distribute the effect and also to present a neat appearance. In use the felt strips are saturated with a corrosive solution such, for instance, as salt water or water containing a small proportion of sulphuric acid. The current set up by the chemical action of the corrosive solution on the metal plates may then be conducted by means of the electrodes through the diseased organ or part. To increase or diminish the electromotive force it is not necessary to disengage the wire, for the wire clip may be moved into engagement with any one of the stems of the copper plate, as indicated by Figs. 1 and 4.

Calcareous Bricks in Germany.

There are as yet no factories for the production of sand-lime bricks within the limits of this district, though many have been erected in Germany within the past few years. There does not seem to have been uniform success in the production of sand-lime bricks in Germany. In a recent number of the *Thonindustrie-Zeitung* reasons for this non-success are freely discussed, and may be summarized as follows:

So many plants have been suddenly erected that bad results have grown out of the lack of proper experience in handling, rather than out of defective equipment. The main causes for defective products are inexperience in slacking lime and in mixing the mortar. Good white lime and clean, sharp sand are necessary for good results. The product is rarely spoiled in the mere pressing and drying. Naturally that brick will be best which is pressed the hardest, but the customary presses are entirely adequate; hence, the two reasons above assigned alone remain. In handling sand-lime bricks one frequently finds in them clods of clay the size of a filbert that naturally destroy their value, which depends upon so perfect a mixture that no lumps remain and every grain of sand has its coating of lime. Imperfectly slacked lime is even more detrimental. The process of slacking greatly increases the volume of the article, and if insufficient water be added in the process, absorption of moisture from the atmosphere takes place after the brick is made, expanding it and causing seams or cracks in it. Such cracks may be too small for ordinary detection, yet the defect is nevertheless a serious one. It is best to use in slacking, sufficient water to produce a soft, mushy powder, damp enough to admit of balling, but the plan of allowing the mixture to rest in the bed for at least twenty-four hours, instead of at once feeding it to the press, is the safest. Little differences in composition are thus equalized and the mixture becomes more pliable and plastic.—Hugo Muench, Consul at Plauen, Germany.

The Current Supplement.

The current SUPPLEMENT, No. 1493, opens with the conclusion of Emile Guarini's article on the electro-metallurgy of iron and steel. Many illustrations of plants actually in operation accompany the text. Mr. William R. Hill, formerly engineer of the Aqueduct Commission of New York, tells something of the modifications of the plans in the new Croton Dam. Dr. Wiley's exhaustive paper on the results of his borax experiments is concluded. Mr. E. A. S. Whitford describes a new design of reinforcement for concrete steel girders. The St. Louis Exposition is represented in the number by two articles of widely different nature, the one on the Tyrolean Alps, the other on the Curtis steam turbine. Both articles were prepared by a representative of the SCIENTIFIC AMERICAN at the fair. "The Chemistry of Cottage Cheese" is the title which Mr. F. H. Hall has selected for a very instructive article. Mr. Charles H. Stevenson, whose articles on the aquatic industries have doubtless attracted no little attention, writes on oil from the livers of sharks and related species, and on beaver furs. T. H. Blakesley, M.A., in an article on direct-vision spectroscopes, writes in a scientific vein. His article will doubtless be appreciated at its true worth by students of chemical physics. The succession of changes in radio-active bodies is made the subject of some comment.

A MARVELOUS AUTOMOBILE RECORD—103½ MILES AN HOUR.

Decidedly extremes met when the third day of the Ostend automobile week commenced with a race from Bruges, that old-fashioned, sleepy, historic town, which seems to represent everything that is slow and long established. The spectacle of the invasion of motor-cars, rushing and puffing in the streets of this calm and ancient city of the past, seemed highly incongruous. The race started from Bruges, and the route to be followed ran to Blankenberghe and back. It was a trial for touring cars, and thirty competitors presented themselves. The road, although paved, is good, and the same route was taken for the return—the "route de pierre" as it is called in the country. It passes through a silent, melancholy district intersected by the green waters of slow canals, and interspersed with windmills.

The following account of the Ostend events and the accompanying illustration are from the Car:

The great event was the mile with a standing start, where it was confidently expected that records in all the classes would fall. The cars had been carefully tuned up, and everything was in their favor.

This race was open not only for the five categories of racing vehicles, but also for seven categories of touring cars, according to the price of the chassis. The day opened hot as usual, with a strong north-east wind which helped the competitors, and the result of the day's racing was very remarkable. Records fell rapidly, and everything existing in this direction was quite wiped out. Not only were the records officially beaten, but from calculations made on the spot, for the last 600 meters of the mile tremendous speeds were reached. It is estimated that the cars traveled up to 160 kilometers (100 miles) an hour. The Darracq cars were the favorites of the day, and it is to them that the victory fell in the voiturette class, as well as in the class for the heavy cars.

Mile, Standing Start.

A.—Motor Bicycles.—1, Olieslagers (Minerva), 59 2-5s. (world's record); 2, Seguy (Griffon), 1m. 6 2-5s.; 3, Coppin (Red Star), 1m. 16 2-5s.

B.—Motor Cycles.—1, Rigal (Buchet), 1m. 16 1-5s.; 2, Pillette (De Dion-Bouton), 1m. 18s.

C.—Voiturettes.—1, Edmond (Darracq), 1m. 1 4-5s. (world's record).

D.—Light Cars.—1, Hanriot (Bayard), 56s. (world's record).

E.—Cars.—1, Baras (Darracq), 48 3-5s. (world's record); 2, Rigolly (Gobron-Brillié), 50 1-5s.; 3, Le Blon (Hotchkiss), 1m. 22s.

Touring Cars.

A. (chassis of less than 4,000 francs).—1, Gachet (Boyer), 2m. 4 3-5s.

B. (less than 6,000 francs).—1, Fischer (Vivinus), 1m. 27 3-5s.; 2, Gabreau (Boyer), 1m. 34 4-5s.; 3, De Liedekerke (Vivinus), 1m. 37 2-5s.

C. (less than 10,000 francs).—1, Landrin (Serpellet), 1m. 30s.; 2, De Breyne (Darracq), 1m. 33 3-5s.; 3, Poncelet (Vivinus), 1m. 37s.

D. (less than 15,000 francs).—1, Laminne (Rochet-Schneider), 1m. 18s.; 2, Finet (Rochet-Schneider), 1m. 19 3-5s.; 3, Grégorius (Rochet-Schneider), 1m. 23 2-5s.

E. (less than 20,000 francs).—1, Gaste (Automotrice), 1m. 47 2-5s.; 2, Mahieu (Automotrice), 1m. 58 1-5s.; 3, Cordonnier (Mors), 2m. 12s.

F. (less than 30,000 francs).—1, Delesalle (C. G. V.), 1m. 40 4-5s.

G. (more than 30,000 francs).—1, De Caters (Mercedes), 1m. 3-5s.; 2, De Jochems (Mercedes), 1m. 10 3-5s.

The interesting part of the Ostend meeting from a racing point of view came to an end with the flying kilometer, which took place between Ostend and the bridge of Snaaskerke. The principal event was the last round of the struggle between Rigolly and Baras, who were so close together in the other speed competitions. There were, indeed, only three competitors in the heavy-car class, Le Blon on a Hotchkiss being the third. In point of view of speed the Ostend race wipes out all existing records, and the victory of Rigolly, who covered the flying kilometer in 21 3-5 sec. at a speed of 166 kilometers, 666 meters an hour (that is to say, 103½ miles per hour) upsets all calculations

of wind resistance and leaves one to wonder to what fantastic figure automobile speed will take us.

Baras was not far behind Rigolly, for his Darracq accomplished the distance in 22 sec., while Le Blon, who is gradually getting his Hotchkiss tuned up, covered the kilometer in 25 1-5 sec. In the other classes the only record was obtained by Edmond on a Darracq voiturette, who covered the distance in 30 2-5 sec. Following is the result of the different classes:



A MARVELOUS FEAT: RIGOLLY TRAVELING AT THE RATE OF 103½ MILES AN HOUR.

The Flying Kilometer.

(1,000 Kilos. Class).—1, Rigolly (Gobron-Brillié), 21 3-5s.; 2, Baras (Darracq), 22s.; 3, Le Blon (Hotchkiss), 25 1-5s.

(Light Cars).—1, Hanriot (Bayard), 26 4-5s. Voiturettes.—1, Edmond (Darracq), 30 2-5s.

Motor Tricycles.—1, Rigal (Buchet), 12m. 35 2-5s. He finished by pushing his machine.

Motor Bicycles.—1, Seguy (Griffon), 36 2-5s.; 2, Coppin (Red Star), 40 4-5s.; 3, René (Red Star), 45 3-5s.

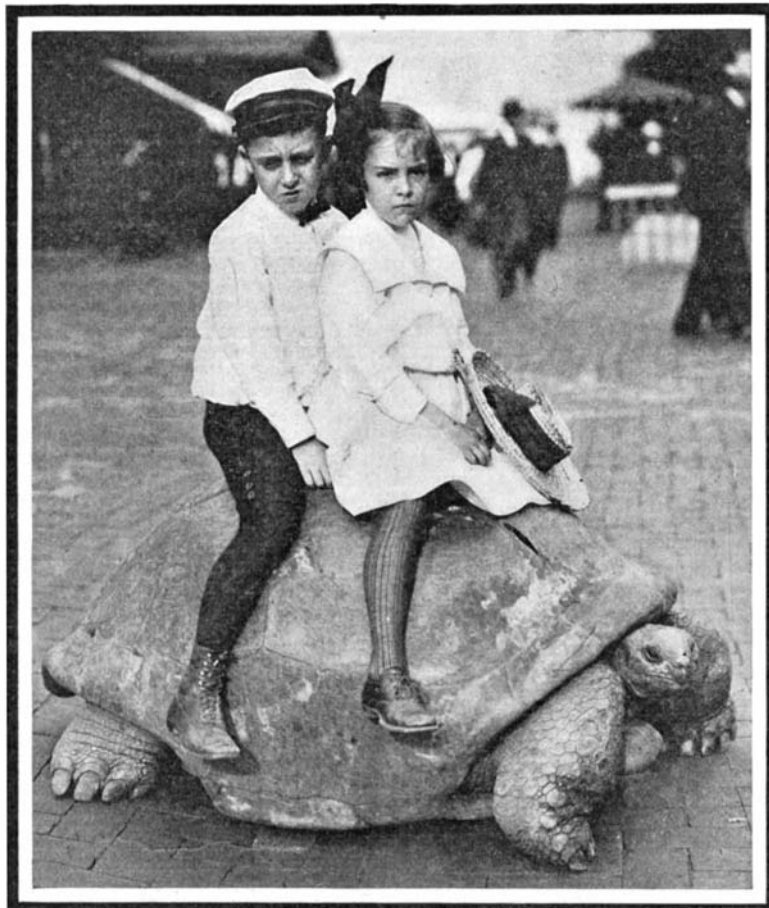
Tourists' Section.

Chassis less than £240.—1, Gabreau (Boyer), 49 3-5s.; 2, Fischer (Vivinus), 50s.; 3, Trentelivres (Vivinus), 50 4-5s.

Chassis less than £400.—1, Landrin (Serpellet), 40 2-5s.; 2, Homback (Vivinus), 49s.; 3, Poncelet (Vivinus), 49 4-5s.

Chassis less than £800.—1, Deville (Serpellet), 40 3-5s.; 2, Mulders (Fiat), 44 2-5s.; 3, Cordonnier (Mors), 46 1-5s.

Chassis less than £1,200.—Delesalle (C. G. V.), 50s.



Copyright 1904 by Louisiana Purchase Exp. Co.

GIANT TORTOISE WHO WEIGHS 970 LBS. AND IS REPUTED TO BE 300 YEARS OLD. HE CAN EASILY CARRY TWO FULL-GROWN MEN.

Chassis more than £1,200.—1, De Caters (Mercedes), 30s.; 2, De Jochems (Mercedes), 35s.

Copper smelting was attempted in this country as early as 1650, but the real inception of the industry dates from 1845, when Lake copper first appeared on the market. In the latter year, also, smelting works were erected at Boston and Baltimore to treat ores imported from Chile and Cuba.

THE OLDEST KNOWN INHABITANT OF THE GLOBE.

BY THE ST. LOUIS CORRESPONDENT OF THE SCIENTIFIC AMERICAN.

Several years ago, when the son-in-law of Karl Hagenbeck, the animal trainer, was looking for interesting specimens, he learned of the existence on the island of Seychelles, off the coast of Madagascar, of a giant tortoise, that was celebrated among the natives not merely for its great size—it weighs 970 pounds—but for the fact that there was documentary evidence that

it had been living on the earth for over 150 years and probable evidence that it was from 100 to 150 years older than that. After careful investigation, he was satisfied of the truth of the statement, and set about to secure the loan of this animal (which, by the way, is held in the highest esteem and respect on the island), for exhibition at the St. Louis World's Fair. Not until the strongest assurances were made that the venerable curiosity would be returned to the Seychelles did the native population consent to part with him for his long

vacation. We are informed by Mr. Hagenbeck that when the tortoise reached this country, it was found that a tiny palm tree was growing from the back of the creature. The tortoise loves the mud, and it is evident that soil was washed into a deep scar on his back and that the seeds of the palm, mixed with the earth, took root and the tiny growth had thrived in its portable field.

The tortoise is the longest-lived animal, exceeding even the elephant, which frequently exceeds one hundred years of life. The fact that 150 years ago the Seychelle natives began to take particular pride in this tortoise because of its age makes it certain that it must have been at least one hundred years of age at that time. This is borne out by the condition of the shell, which is a guide to determining the age. Further evidence is its most abnormal size.

It possesses extraordinary lifting strength. While it was in its heavy cage at the World's Fair express office, it became impatient, and proceeded to break its way out. It smashed the heavy 2 by 8 inch timbers with ease. The accompanying snapshot shows two children taking a novel ride upon the back of this giant sea monster.

At Chu-Yung, in Mongolia, exists a wonderful set of inscriptions, recalling the Rosetta stone of Egypt. It was found on the marble archway which was erected in 1345. The arch is of white marble fashioned to form a ceiling of three plain surfaces, on which Buddhistic figures are carved in relief. The walls are covered with similar carvings, and with inscriptions in six languages. Five of the languages are Sanskrit, Chinese, Tibetan, Mongol, and Uigur respectively; the origin of the sixth remains unknown. It was considered at first to be Juchen, the national script of the Chin, or Gold Dynasty, who followed the Kitans as the dominant power in North China in the early part of the twelfth century, but the few specimens of Juchen writing extant did not coincide with it. Dr. S. W. Bushell, the physician of the British Legation at Peking, however, has identified the sixth language as a Tangut script, of which few specimens are existent. This writing was adopted in 1036 by Yuan Hao, the founder of the Tangut kingdom, and was apparently modeled on the lines of the antique Chinese official script. The Chu-Yung Kuan gateway and a stone stele in a Buddhist monastery are the only two considerable examples of the Tangut script which are known to exist.

The scenic tunnel, under the Horseshoe Falls of Niagara, which has just been completed, was undertaken for the Niagara Falls Queen Victoria Park Commission in order to provide a perfectly safe view of the cataract from below. A shaft was sunk 127 feet and from this a tunnel was constructed, curving out under the Horseshoe Falls 800 feet. From this laterals were run into the gorge, where large observation-rooms will be constructed of glass where tourists can sit in easy chairs and look out. A large electric elevator has been put into the shaft, and from the bottom a large board walk has been constructed to the mouths of the various tunnels.

RECENTLY PATENTED INVENTIONS.

Of Interest to Farmers.

LOADING DEVICE.—J. P. FOSTER, London, Ohio. Although capable of many uses this device may be described as applied to the loading of corn on wagons. In many parts corn after husking is thrown on the ground and when the wagons come along to receive it has to be picked up by hand and thrown over the sides of the wagon. The object is to do away with this laborious, slow process. This is accomplished by means of an improved device designed to be applied to a wagon and to be used with sacks for holding corn or other material.

Of General Interest.

PUZZLE.—M. N. STRICKLAND, Galveston, Texas. In this patent the invention pertains to improvements in puzzles of that class in which the rolling device is to be moved from the starting-point to a finishing-point, there being barriers or obstacles to the movement of the rolling device. The object is to provide a puzzle that will be difficult to solve and prove entertaining.

QUOIN.—W. V. CROCKETT, Corsicana, Texas. The invention relates to improvements in quoins for locking type-forms; and the object is to provide bearing-plates in connection with the wedges so connected that by the sliding movement of the wedges the plates will be spread apart without lengthwise movement, thus preventing any movement or displacement of the type, as sometimes happens when a wedge engages directly therewith.

VENTILATOR FOR HATS, ETC.—J. P. MARTIN, Ogden, Utah. In this instance the invention refers to ventilators, and more particularly to those adapted for application to hats or such structures as tents. Its principal objects are to provide such a device which while easy to apply will provide an effective and readily-controllable supply of fresh air and simultaneously remove that heated or vitiated.

CABINET.—E. KROM, New York, N. Y. More especially this invention relates to cabinets adapted for the storing of such cylindrical objects as phonograph records. These records being of wax are fragile and must be preserved with considerable care, and when many are to be provided for it becomes a matter of difficulty to do this and at the same time have them accessible for ready selection. This cabinet obviates these difficulties.

SNATCH-BLOCK.—J. E. GILCHRIST, South-bend, Wash. In this patent the invention has reference to snatch-blocks, and more particularly to those designed for use in logging. Its principal objects are to provide such a device which will be both light and strong and which will prevent the coacting cable from fouling or straining the shell of the block.

SAP-SPOUT AND COVER.—G. H. GRIMM, Rutland, Vt. The inventor provides a spout and cover for the bucket into which sap runs from the spout, the arrangement being such that the spout insures free flow of sap from the bore, and the cover rises sufficiently on tipping the bucket to allow of emptying it without removal from the supporting-hook and without the operator being required to manipulate the cover, and the cover protects contents against rain, snow, leaves, and the like, and is firmly supported from the spout and can be readily swung into open position to allow of inspection, and is not liable to be detached by strong gusts of wind.

TABLE.—F. G. DYER, Eastport, Maine. To accomplish using this table as a card or similar table or which may be so adjusted as to form the moving part of a self-waiting dining-table, the inventor provides a base and a top with a column removably connected to each, the top and base being capable of direct rotatable connection. With this equipment the table may be assembled in the usual manner and used as a table proper, or the column removed from base and top directly joined, whereupon base and top may be placed in center of dining-table to form a self-waiter therefor.

SEAT-PROTECTOR FOR CHILDREN'S DRAWERS.—DOROTHY B. CHAMBERLAIN, Fort D. A. Russell, Wyoming. The object of the invention is to provide an inexpensive shield of combined waterproof and warm fibrous material that is neat in appearance, readily attached upon or removed from the drawers, which affords perfect protection from dampness when sitting upon wet grass or ground, which will not interfere with other underwear or the outer dress, will remain invisible, and that at all times permits utmost freedom for the wearer's lower limbs.

GAGE.—H. S. GARDNER, Amsterdam, N. Y. In this patent the invention has reference to measuring instruments; and its object is the provision of a new and improved gage, more especially designed for conveniently and quickly determining the sizes of twist-drills and other objects, and to gage wires and the like.

HAME-FASTENER.—S. T. MARLETTE, Buffalo, N. Y. Mr. Marlette's invention belongs to that class of fasteners in which there are two hook members adapted to be connected to the loops at the lower ends of the hames and a lever connected to these hook members, so that when the lever is turned, it will draw the hook members and the ends of the hames

together, the lever being provided with a latch to hold the hook members in the locked position.

VIOLIN.—J. D. LOPPENTIE, Orange, Cal. In this patent the invention relates to stringed musical instruments—such as violins, cellos, and the like—having strings played on by the use of a bow. The object is to provide a violin arranged to insure the production of a full, harmonious tone when the strings are sounded by the bow.

Hydraulics.

HYDRAULIC PRESS.—E. CROWE, Birchholm, Bushey Wood, Totley Rise, Sheffield, England. This invention relates to means used for forging and other purposes—such as bending and testing armor-plates, flanging, and the like; and its objects are to enable valves controlling press action to be worked directly and promptly by hand without necessity of using auxiliary hydraulic or other fluid-pressure independent of that whereby the press-head itself is operated, and to enable the speed of descent of the head on to the work to be regulated at will and the head arrested at any point in descent. It is an improvement on the invention for which Mr. Crowe made previous application for Letters Patent.

Machines and Mechanical Devices.

COMPRESSOR.—I. CARLIER, Denver, Col. Mr. Carlier's invention has reference to improvements in compressors and has particular application to a device of this character for compressing air through the agency of a liquid or fluid. One of the principal objects is to construct a compressor which shall be exceedingly simple in its construction, positive in its operation, and capable of withstanding a maximum amount of wear and tear.

RIVET-MAKING MACHINE.—C. W. RICHARDS, Cleveland, Ohio. In this patent the invention relates to a machine for automatically forming headed rivets from a continuous bar of iron, and one of the leading features of the invention lies in the provision of a stationary rivet-head die and a moving plunger which operates toward and from the die, carrying the rivet-blank to the die and withdrawing the rivet upon the completion of the formation thereof.

ICE-CUTTING MACHINE.—R. MOWERY, Hot Springs, Ark. Mr. Mowery's object is to provide an improved cutting-machine more especially designed for cutting blocks of ice into small pieces for use in hotels and other establishments and arranged to allow convenient and quick handling of the block during the cutting operation.

MACHINE FOR MAKING CIGARETTE-TUBES.—J. C. HANSEN-ELLEHAMMER, 99 Istedgade, Copenhagen, Denmark. The inventor aims to avoid intermediate stages between the tube-making and tube-filling device, which is obtained by making the filling device movable upward or sidewise and capable of placing the tube simultaneously with the folding of the paper direct on to the outlet-spout of the filling device. Means are provided to leave the paper tube free on the spout. The tube is filled and removed, and the tube-making device is moved back to first position ready for the next cigarette. This arrangement may be used for tubes whose edges are connected by folding, as well as those stuck by an agglutinant.

REVOLVING-HOOK SEWING-MACHINE.—P. ANSCHUTZ, New York, N. Y. The object of the invention is to provide a revolving-hook sewing-machine which is simple and durable in construction, very effective in operation, and arranged to insure the formation of a uniform lock-stitch in a simple manner without danger of missing stitches.

STREET-CLEANER.—J. J. SMITH, Joliet, Ill. In this case the purpose is to provide a cleaner arranged to free the street of all dirt, litter, and the like, by the use of jets of water under pressure and directed in such manner as to wash the dirt, etc., into a curb or gutter, from which it can readily flow to the sewer or other place of discharge, or can be gathered in heaps, if desired.

MULTIPLE-SPINDLE BORING-MACHINE.—C. SEYMOUR, Defiance, Ohio. Mr. Seymour's object is to provide a multiple-spindle boring-machine arranged to permit a convenient adjustment of the boring-tools relative to the work, to bore a number of holes simultaneously and in a desired predetermined order, and to allow adjustment of the work-carrying table relative to the boring-tools to bore holes of a desired depth without varying the throw of the work-carrying table.

PLAITING ATTACHMENT FOR SEWING-MACHINES.—O. RICKENMANN, New York, N. Y. In carrying out the present improvement the inventor has in view the construction of an attachment which shall feed to the needle or sewing mechanism of the machine a strip or tape of suitable material and shall automatically form the same into plaits or ruffles, the present invention being especially designed for the making of plaits of the character commonly known as "box-plaits."

DRIVING DEVICE FOR MUSIC-SHEETS.—H. MEYER, New York, N. Y. In this patent the invention relates to automatic piano-players and like musical instruments; and its object is to provide a new and improved driving device for the music-sheet of a musical instrument arranged to insure a uniform even travel of the sheet in a very simple manner.

TYPE-WRITING MACHINE.—J. D. WHITE, 50 Clanricarde Gardens, London, England. The objects of Mr. White are to provide a machine in which as character after character is struck the printing passes along from left to right without corresponding lateral movement of the types or converse lateral movement of the paper, and in which, as the characters are printed in continuous succession, line after line is printed in sequence, the new line commencing after the previous one is completed, without special movement or attention of the operator. For this purpose he uses, combined with other mechanism, a type-cylinder and hammer-cylinder resembling those described in his former United States patent.

MACHINE FOR MAKING VEGETABLE HAIR.—W. HANSON, Fort Myers, Fla. Mr. Hanson's invention pertains to improvements in machines for making vegetable hair, the object being to provide a machine of this character by means of which the product may be rapidly formed from the fans of certain kinds of palm or palmetto which grow wild and in vast abundance in Florida and elsewhere.

TRANSMITTING MECHANISM.—J. J. KOOMAN, New York, N. Y. In this patent the improvement refers to a gearing which may be used for the mechanical transmission of power for all purposes. It is not limited in its application, as the invention may be applied to bicycles, engines, manual powers, and for any other purpose requiring the mechanical transmission of motion.

Medical Devices.

DENTAL DUCT APPLIANCE.—F. P. ABBOTT, New York, N. Y. The inventor employs a cushion-pad to the interior of the mouth over the sublingual ducts, through which saliva is supplied, the pad associated with means for pressing it in place, so as to choke off the saliva flow. The pressure device employed contemplates a form of compress which has a rest to be applied to the jaw in a position to co-operate with the mouth-pad, and this compress also includes means by which the parts may be operated quickly and to secure nicety and accuracy, to the end that the appliance may be used without hurting the patient and quickly dismantled as the needs of service require.

APPARATUS FOR HEATING AIR.—F. T. BRENNER, Quincy, Ill. One of the principal objects of the invention is to provide an apparatus through the medium of which air may be readily, easily, and quickly heated and conducted in puffs or jets to the middle ear for the treatment of the auricular nerves. The apparatus is conveniently manipulated, occupies little space, and may be manufactured at little expense.

Railways and Their Accessories.

CAR-BUMPER.—E. MORAN, Charleston, W. Va. The chief object in this case is to provide bumpers which will remain engaged when cars are moved from the rear and are passing around a curve, in which case under certain conditions—as, when a series of cars are loaded or train very long—a strong lateral pressure is applied and there is extreme danger of derailment of one or more cars. Each car at opposite ends is provided with bumpers of different construction, corresponding with bumpers of other cars, so that they are adapted to engage and lock.

CAR-DUMP.—E. MORAN, Charleston, W. Va. Mr. Moran's object is to provide a dump for mining-cars, same including track running from the mine at down grade to the dump proper and return-track from dump to mine also down grade. A car leaving a mine runs by gravity to the dump, contents are discharged and returns by gravity. The dump is so constructed that it is held normally elevated or at rearward inclination and depressed by loaded car, and when the latter's contents are discharged the dump is automatically raised, so that the car runs back off the same by gravity, and passes on to the return-track.

METHOD OF AND MEANS FOR ENABLING BRAKES TO BE APPLIED TO OR RETRACTED FROM EITHER SIDE OF RAILWAY-VEHICLES.—F. W. GASMIE, 2 Victoria Street, Petersburg, S. Australia, Australia. This invention relates to a method of and means for the application or retraction of independent or hand brakes from either side of a railway-vehicle, the especial object being to enable the application or retraction of the brakes to be accomplished without any risk by a person walking along on either side of the train.

RETURN-TICKET-VOUCHER ENVELOP.—C. J. SWANK, Oakland, Kan. Mr. Swank's invention relates particularly to improvements in envelopes for sealing vouchers designed as a means for securing the issue of a return-trip railway-ticket. The object of the improvement is to provide an envelop particularly adapted for incasing the voucher.

MAIL-POUCH ATTACHMENT.—W. D. MILLER, Saco, Mont. The purpose of the invention is to render more certain the catching of a mail-pouch by the arm of a moving train and the catching of the delivered pouch by the arm of the mail crane. With apparatus now ordinarily used, should the arm of the moving train strike the pouch at any point excepting approximately the middle thereof the arm fails to securely engage the pouch and the latter is frequently not caught by the train, and when thrown from the train it is jarred and contents

often injured. The invention overcomes these disadvantages.

Pertaining to Vehicles.

TILTING ATTACHMENT FOR VEHICLE-TOPS.—D. W. LEONARD, near Hurn, Wash. In this instance the object is to provide an attachment for the foldable tops of vehicles that may be readily applied thereto and which affords convenient and reliable means for instantly raising or lowering the foldable top, and when the top is quickly lowered cushions its descent so as to prevent jar and injury to the prop-braces, bows, or other top parts.

TIRE-CLAMP.—P. F. SCHAFER, Philadelphia, Pa. In this patent the invention consists in certain novel constructions and combinations of parts; and the object Mr. Schaffer has in view is to improve and simplify that particular type of tire-clamp used for securing pneumatic or solid tires on the felly of an ordinary vehicle-wheel.

Designs.

DESIGN FOR OIL-CLOTH.—A. B. BUCHANAN, Peekskill, N. Y. Mr. Buchanan has invented four new original designs for oil-cloth. The patterns are richly varied and form a pleasing ornamental departure from the styles now in vogue.

NOTE.—Copies of any of these patents will be furnished by Munn & Co. for ten cents each. Please state the name of the patentee, title of the invention, and date of the paper.

Business and Personal Wants.

READ THIS COLUMN CAREFULLY.—You will find inquiries for certain classes of articles numbered in consecutive order. If you manufacture these goods write us at once and we will send you the name and address of the party desiring the information. In every case it is necessary to give the number of the inquiry.

MUNN & CO.

- Marine Iron Works, Chicago. Catalogue free.
- Inquiry No. 5856.**—For manufacturers of armor cloth or bullet-proof cloth.
- AUTOS.**—Duryea Power Co., Reading, Pa.
- Inquiry No. 5857.**—For manufacturers of aluminum signs.
- "U. S." Metal Polish, Indianapolis. Samples free.
- Inquiry No. 5858.**—For manufacturers of tailors' cement for clothing.
- Perforated Metals, Harrington & King Perforating Co., Chicago.
- Inquiry No. 5859.**—For manufacturers of corset laces.
- FOR SALE.—Patents on collapsible umbrella. Box 1125, Omaha, Neb.
- Inquiry No. 5860.**—For manufacturers of match-making machinery.
- If it is a paper tube we can supply it. Textile Tube Company, Fall River, Mass.
- Inquiry No. 5861.**—For the address of the manufacturers of the Clow hydrant.
- Sawmill machinery and outfits manufactured by the Lane Mfg. Co., Box 13, Montpelier, Vt.
- Inquiry No. 5862.**—For makers of yard (not fire) hydrants with 1 and 2-inch inlets and outlets.
- If you wish to buy patents on inventions or sell them, write Chas. A. Scott, 340 Cutler Building, Rochester, N. Y.
- Inquiry No. 5863.**—For makers of rubber stamp supplies and outfits.
- Manufacturers of patent articles, dies, metal stamping, screw machine work, hardware specialties, machinery and tools. Quadriga Manufacturing Company, 18 South Canal Street, Chicago.
- Inquiry No. 5864.**—For makers of machinery for drying glue.
- The celebrated "Hornsby-Akroyd" Patent Safety Oil Engine is built by the De La Vergne Machine Company Foot of East 138th Street, New York.
- Inquiry No. 5865.**—For a machine similar to a carpet sweeper for taking up the dust.
- We manufacture anything in metal. Patented articles, metal stamping, dies, screw mach. work, etc., Metal Novelty Works, 43 Canal Street, Chicago.
- Inquiry No. 5866.**—For hand power or power washing boxes for extracting gold from sand.
- Patented inventions of brass, bronze, composition or aluminum construction placed on market. Write to American Brass Foundry Co., Hyde Park, Mass.
- Inquiry No. 5867.**—For makers of cubeb or cinamon cigarettes.
- Inquiry No. 5868.**—For makers of earthenware cuspidors.
- Inquiry No. 5869.**—For makers of artificial ice plants.
- Inquiry No. 5870.**—For makers of tattooing machines and supplies.
- Inquiry No. 5871.**—For the address of the "Niagara" Hydraulic Ram Manufacturing Company.
- Inquiry No. 5872.**—For manufacturers of steam turbine engines.
- Inquiry No. 5873.**—For manufacturers of sand blast machines such as are used in cleaning front of stone buildings.
- Inquiry No. 5874.**—For makers of buffers, or polishing wheels, for silverware.
- Inquiry No. 5875.**—For a machine for setting back the thread on wagon axles, when the wheel and shoulder have become worn and cause the wheel to rattle.
- Inquiry No. 5876.**—For the manufacturers of the "King" can opener with corkscrew.
- Inquiry No. 5877.**—For makers of luminous paint.
- Inquiry No. 5878.**—For the manufacturers of a dinner kettle that is heated by acetylene gas.
- Inquiry No. 5879.**—For the manufacturers of a flexible metallic mantle that is indestructible by the duty it has to perform when used for lighting purposes.



HINTS TO CORRESPONDENTS.

Names and Address must accompany all letters or no attention will be paid thereto.

References to former articles or answers should give date of paper and page or number of question.

Inquiries not answered in reasonable time should be repeated; correspondents will bear in mind that some answers require not a little research, and, though we endeavor to reply to all either by letter or in this department, each must take his turn.

Buyers wishing to purchase any article not advertised in our columns will be furnished with addresses of houses manufacturing or carrying the same.

Special Written Information on matters of personal rather than general interest cannot be expected without remuneration.

Scientific American Supplements referred to may be had at the office. Price 10 cents each.

Books referred to promptly supplied on receipt of price.

Minerals sent for examination should be distinctly marked or labeled.

(9441) G. C. asks: 1. Is there any purely geometrical method for constructing a line equal to one-quarter a given circumference? A. A line equal to the quarter of a circumference cannot be exactly determined by geometrical methods.

second law of friction. In designing locomotives, it is the weight on the wheels which governs the number of wheels by its limit, which is about 20,000 pounds on each driving wheel in the heaviest engines, and varies to as low as 7,000 pounds per driver.

(9442) E. N. M. asks: Will you tell me how to make a permanent steel magnet? I have been looking over your catalogue, and I find nothing that enlightens me on the subject? A. To obtain a good steel magnet, it is necessary in the first place that the steel shall be adapted to this purpose.

NEW BOOKS, ETC.

DIE ELEKTRISCHE BÜHNEN UND EFFEKTBELUCHTUNG. By Dr. Th. Weil. Vienna and Leipzig: A. Hartleben's Verlag, 1904. 16mo.; pp. 256. Price \$1.25.

The book deals with theatre stage illumination. The author has treated a very special branch of electricity in an admirable manner. The subject is of growing importance, and each new theatre is better than the last as regards the electrical installation.

AMERICAN METER PRACTICE. By Lyman C. Reed. New York: McGraw Publishing Company, 1903. 8vo.; pp. 196. Price \$2.

This book will be found useful both to the central station manager and to the consumer of electricity. It describes the principles and methods of construction of typical American meters, and contains, among others, chapters on the "General Management of the Meter Department" and on "Reading Meters," chapters of value to the two classes of men above mentioned, respectively.

INDEX OF INVENTIONS

For which Letters Patent of the United States were Issued for the Week Ending August 2, 1904

AND EACH BEARING THAT DATE (See note at end of list about copies of these patents.)

Table listing inventions with names and dates, including Addressing machine, Advertising or picture exhibiting apparatus, Arc extinguishing means, Arm rest for books, etc.

Table listing inventions with names and dates, including Bottle stopper removing device, Brass tray, Box rattle making machine, Brake beam, Brake shoe, Brakes, pressure retaining device for fluid pressure, Bread, making, L. C. Sharpless, etc.

Table listing inventions with names and dates, including Extractor, See Lime and sediment extractor, Eyeglasses, G. A. Stiles, Eyeglasses, L. F. Adt., Eyeglasses or spectacles, A. D. Bloch, Fabric, machine for extruding liquid from, I. E. Palmer, etc.

Liquids, apparatus for filling casks or like vessels with, A. B. von Echt 766,433

Loading or unloading apparatus, J. Randall Lock, F. M. Thompson 766,472

Lock, W. J. Carroll 766,665

Locking mechanism, F. H. Richards 766,791

Locking mechanism, coin controlled, W. H. Scott 766,396

Locket, H. D. Hough 766,620

Locomotive tender gate, W. R. & R. Pitt. Loom shuttle checking means, H. Wilkinson 766,478

Loom shuttle motion, Steere & Wardwell 766,776

Loom temple, thread cutting, A. A. Hull 766,501

Loom web tension means, E. F. McGuiness 766,382

Lubricating device, W. B. Potter 766,382

Lubricator, L. Chapman 766,756

Malt pouch catching and delivering mechanism, W. B. Rohmer 766,731

Malt turning apparatus, Eisner & Worz 766,230

Mandrell, collapsible, E. Maxham 766,459

Mandrel, conduit, H. C. Baker 766,581

Match making machine, J. P. Wright 766,567

Matte, producing, Baggaley & Allen 766,656

Mattress filling machine, G. W. Wareham 766,476

Mechanical movement, A. W. Barr 766,214

Medicines for hypodermic purposes, packaging of, H. H. Hager 766,344

Metal slitting and stretching machine, J. F. Golding 766,181

Metallic tie, E. M. Dolan 766,674

Meter, W. R. Sharp 766,535

Mining, apparatus for laying the dust or pulverized rock in, T. J. Britten 766,163

Miter box, F. H. Richards 766,795

Miter box frame, F. H. Richards 766,794

Molds, apparatus for producing sand or other, J. W. Fraser 766,683

Mortising machine, G. A. Ensign 766,607

Moth exterminator, H. H. Kennedy 766,700

Motor, M. Alger 766,410

Motor control, alternating current, G. Winter et al. 766,310

Multiple cylinder engine, J. G. Callan 766,323

Music chart, H. L. Branson 766,215

Musical apparatus accentuating mechanism, mechanical, R. W. Pain 766,516

Musical instrument, stringed, C. M. Funk 766,339

Nail inspecting machine, C. W. Sponsel 766,200

Necktie holder, F. L. Wooley 766,408

Nut lock, E. Wacker 766,782

Nut wrench, axle, G. C. Luther 766,508

Oil burner, J. Hewitt 766,251

Ore, coal, etc., apparatus for feeding, W. R. Smith 766,539

Ore concentrator, E. Marsch 766,718

Ores by dissolving in molten bath, recovering values from, Baggaley & Allen 766,654

Ornamental structures, device for forming, L. B. Christopherson 766,595

Packaging machine conveying and delivering means, E. Fidell 766,234

Paints and paint vehicles, production of, Strange & Graham 766,740

Paper board, machine for making, T. W. McFarland 766,461

Party line measured service system, J. L. McQuarrie 766,192

Pasteurizing apparatus, A. H. Reid 766,523

Pea huller, C. W. Moore 766,644

Pedal folding, Danquard & Twitchell 766,602

Pen filling device, fountain, S. A. Vandewater 766,202

Pen, fountain, O. E. Weidlich 766,560

Pen, fountain, A. B. Davis 766,759

Pencil case, noiseless, E. E. Wilhelm 766,308

Perambulator, folding, D. & J. Simpson 766,537

Photographic half tone color screen and chart, A. G. Russell 766,389

Photographic printing outfit case or box, L. Meir 766,368

Photographic tray rocker, W. G. Wolfe 766,483

Piano, manually or mechanically operated, T. Danquard 766,601

Pianos, organs, etc., mandolin orchestral attachment for, N. E. Nelson 766,512

Pianolas, folding pedal for, M. S. Wright 766,312

Picker. See Fruit picker. 766,185

Piling, metal, J. J. Harold 766,754

Pipe coupling or connection, F. W. Carlson 766,633

Pipe expanding and flanging tool, L. D. Lovekin 766,453

Pipe joint, soil and sewer, W. F. J. Lutz 766,739

Pipe mold, M. T. Stevens 766,458

Pipe wrench, L. Mills 766,286

Pistol, fire cracker, H. W. Potter 766,473

Plane, J. A. Traut 766,491

Plane, A. W. Campbell 766,315

Plant chopper or cutter, J. W. Arthur 766,168

Planter, riding corn or cotton, W. L. Cassa 766,160

Playing ball, H. Bentz 766,258

Plow, J. B. Jarmin 766,590

Plow, automobile, H. B. Burdick 766,213

Pneumatic tube system, G. F. Atwood 766,629

Post card exhibitor, J. Koehler 766,269

Potato desiccating apparatus, T. Lackovic 766,455

Powder grain, smokeless, H. Maxim 766,314

Power transmitter, Yost & Conant 766,551

Power transmitting mechanism, clutch device, T. L. & T. J. Sturtevant 766,287

Pressure transmitter, L. L. Prescott 766,649

Printing and registering machine, ticket, W. I. Ohmer et al. 766,439

Pulley, H. J. Gilbert 766,583

Pulp beater, W. White 766,237

Pump, direct acting, H. F. Frisbie 766,734

Pump, force, C. Shellhammer 766,730

Pump regulator, C. Quimley, Jr. 766,751

Pump rod attachment, A. Anderson 766,346

Pumping mechanism, gas apparatus, Haynes & Lindal 766,444

Puzzle ball, W. E. Hoy 766,207

Rail bond former, W. H. Wherry 766,725

Rail cutting machine, portable track, T. E. O'Neil 766,710

Rail joint, F. Lieske 766,625

Rail system, third, T. Jenkins 766,381

Railway and controlling device therefor, electric, W. B. Potter 766,399

Railway current collecting device, electric, Shobe & Embley 766,335

Railway, electric, P. Farnsworth 766,392

Railway, elevated and subaqueous, R. C. Sayer 766,405

Railway gate, pneumatic, F. E. Wilson 766,239

Railway or other vehicles, automatic coupling for, E. C. Gayer 766,184

Railway safety support, W. Hall 766,479

Railway safety appliance, R. B. Williams 766,164

Railway street crossover, F. A. Brewer 766,338

Railway tie, F. M. French 766,328

Railway tie, metal and wood, R. W. Crawford 766,774

Railway trains, apparatus for automatically stopping, H. G. Sedgwick 766,658

Rake. See Hay rake. 766,587

Range finding and sighting appliance for weapons, L. O. Beal 766,666

Razor, safety, O. S. Terry 766,278

Receptacle, R. Y. Bradshaw 766,580

Record medium, E. D. Casterline 766,228

Reduction mill, gradual, D. R. Morrison 766,498

Reel support, detachable, A. S. Baker 766,736

Registering triangle, J. H. Dougherty 766,447

Reversing engine, J. Fawell 766,644

Reversing switch, G. H. Hill 766,677

Ribbon clasp, D. W. Scott 766,564

Rifle sight, combination, C. Kessig 766,588

Rinsing machine, I. E. Palmer 766,541

Riveter marker, C. P. Eagle 766,205

Roasting furnace, L. T. Wright, reissue. 12,254

Rock drill, F. L. Whitehead 766,689

Rock drilling machine cores, apparatus for rinsing, J. Brejcha 766,198

Roller screen, F. M. Spiegle 766,434

Rolling mill, V. E. Edwards 766,421

Rotary engine, A. Carville 766,696

Rotary engine, W. M. Hoffman 766,707

Rotary engine, W. D. Labadie 766,562

Rule, combination, J. E. Wertz 766,641

Safety pin, A. J. Meier 766,205

Sampling tube, L. W. Walter 766,395

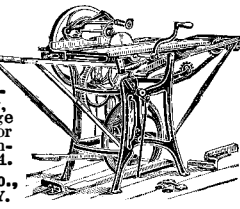
Sash fastener, L. Schley 766,689

Sash fastener, W. Goodcell 766,198

Sash fastener, window, J. G. Belly

Wood-working Machinery

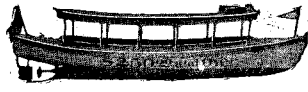
For ripping, cross-cutting, mitering, grooving, boring, scoll-sawing, edge moulting, mortising; for working wood in any manner. Send for catalogue A.



The Seneca Falls M'g Co., 695 Water St., Seneca Falls, N. Y.

MARINE ENGINES

1, 2, 3 and 4 Cylinder Launches 1 1/2 to 40 H. P. 17 to 50 feet. Send for new catalog GRAND RAPIDS GAS ENGINE & YACHT CO. Grand Rapids, Mich.



Sash lock, J. M. Butcher 766,322

Saw detaching mechanism, F. H. Richards 766,384

Saw guide, F. H. Richards 766,796

Saw guide clamp, F. H. Richards 766,798

Sawing apparatus, multiple, H. Dalgety 766,495

Scale, W. P. Stimpson 766,777

Scale, grain weighing and bagging, A. G. H. Bestelmann 766,489

Scale, spring, S. R. Munson 766,460

Screen hanger and fastener, swinging, Romuender & Fellman 766,528

Screw driver and holder, combined, S. P. Lapham 766,270

Seal, A. B. Schofield 766,199

Search light mounting, Webber & McGeorge 766,559

Self clamping bracket, adjustable, C. H. J. Dilg 766,605

Separation, process of, A. Schwarz 766,289

Sewing machine stand drawer lock, W. C. Foley 766,436

Sewing machine, shoe, C. Hildebrandt 766,350

Sewing machine thread clamping device, R. L. Lyons 766,715

Shade or curtain holder, H. H. Forsyth 766,681

Shades to rollers, device for attaching window, W. D. Janas 766,257

Shaft coupling pin, double legged vehicle, Bawden & Catterall 766,412

Shafts and rocker arms, union for rock, F. H. Richards 766,793

Shears, Voellner & Devaux 766,298

Sheet holder, loose, A. Lawson 766,364

Shift key mechanism, F. Wagner 766,299

Shingle mill, W. Thorp 766,295

Shoe, J. M. Le Lievre 766,709

Shovel handle bending machine, J. E. Foulkes 766,176

Signaling system, selective, W. M. Davis 766,224

Silo or tank, L. G. Lease 766,708

Sled, W. A. Shephard 766,290

Sled self propelled, Erdelyi & Davis 766,173

Sleigh, Michaud & Desjardins 766,457

Smelting ore and cleaning converter slag, Baggaley & Allen 766,655

Smoke consumer, H. White 766,749

Soap receptacle and distributor, liquid, T. P. Jarvis 766,624

Soap tablet, A. E. Hughes 766,254

Soldering machine, can, J. A. Booth 766,162

Sound record or blank support, L. Steinberger 766,543

Sound reproducing apparatus, J. Wellner 766,561

Speed controller, E. R. Douglas 766,229

Speed device, variable, W. E. Crane 766,757

Spelter, making, O. Nagel 766,279

Spike making machine, J. Lowry 766,714

Spindle, See Core spindle. 766,392

Sprinkler, L. T. Jarrard 766,259

Stacker, pneumatic, E. L. Griffin 766,343

Stacker, wind, H. E. Bradley 766,163

Stake pocket, M. S. Curley 766,673

Stalk cutter, R. C. Tally 766,401

Stereoscope spring clamp, T. W. Ingersoll 766,698

Storage battery, Cable & Edgar 766,216

Storage system, W. J. H. Bohannan 766,660

Storage vessels, treating, V. Lapp 766,506

Stove, W. H. Calkins 766,217

Stovepipe holder, M. Alston 766,159

Stovepipe, tent, J. McFadden 766,374

Street sweeping machine, J. P. Clark 766,422

Suspender, trousers, J. T. Graddon 766,342

Switch control system, remote, Hall & Sargent 766,391

Syringe, hypodermic, R. Walsh 766,203

Table, J. Herzog 766,695

Tack plate feeder, E. N. Reed 766,770

Tapping machine, automatic reversing, G. B. Painter 766,376

Telegraph instrument, receiving, C. R. Underhill 766,474

Telegraphic apparatus, C. Meray-Horvath 766,369

Telegraphic instrument, A. R. Dickey 766,430

Teleglyph, F. W. Jones 766,189

Telephone box, C. C. Hughes 766,354

Telephone exchange service meter, J. L. McQuarrie 766,375

Telephone exchange system, I. Kitsee 766,450

Telephone locking mechanism, R. W. Goeb 766,241

Telephone messages, apparatus for transmitting, E. W. Day 766,225

Telephone system, W. M. Davis 766,223

Telephone transmission, I. Kitsee 766,503

Telephonic transmission, I. Kitsee 766,451

Telephony, I. Kitsee 766,502

Telephonogram apparatus, C. Huismeyer 766,355

Temperature regulation system, F. M. Schmidt 766,469

Theatrical appliance, L. Green 766,613

Theatrical curtain actuating mechanism, S. H. Garrett 766,238

Thermometer, clinical, C. W. Meinecke 766,720

Threshing machine, C. H. Bidwell 766,161

Tile, W. E. Rivers 766,526

Tin plate mill catcher, automatic, C. A. Bottorff 766,417

Tire covers, apparatus for use in manufacture of wheel, F. S. Ornstein 766,194

Tire nut tightening device, P. Lorang 766,273

Tire, pneumatic, H. A. Palmer 766,463

Tire, wheel, Marks & Metzler 766,637

Tobacco stemming machine, E. C. Phillips 766,466

Toilet comb, W. Winans 766,480

Track fastener, Conrath & Bickel 766,508

Train safety device, Kuhl & Schmidt 766,631

Trees, spring board attachment for felling, C. W. Schilling 766,394

Trolley, O. Funkhouser 766,177

Trolley, electric, G. Ondo 766,650

Trolley wheel, J. T. McCafferty 766,766

Trolley wire hanger cut out, G. Hall 766,692

Trousers press, O. M. Morse 766,645

Tube flanges, machine for attaching, W. W. Doollittle 766,227

Tube forming machine, J. H. Schlafly 766,531

Tubes, rods, etc., drawing machine for, L. C. Smith 766,291

Turbine, J. Stumpf 766,293

Turbine, E. Cheshire 766,594

Turbine blade, E. Cheshire 766,593

Turbine government mechanism, E. Cheshire 766,667

Turbine, steam, P. T. Perkins 766,619

Type holder, H. S. Folger 766,337

Type setting laundry marking machine, automatic, T. J. Hume 766,255

Type writer copy holder, E. J. Bonine 766,752

Typewriters, etc., carriage shifting mechanism for, S. Myers 766,371

Typewriters or the like, type bar construction for, E. P. Kanath, reissue 12,252

Type writers, etc., platen for, J. H. Dyett 766,332

Type writing machine type cleaner, A. M. Wing 766,786

Umbrella locking device, Ekman & Pihl 766,678

Vaginal irrigator, C. O. Farrington 766,336

Valve, fusible plug, J. L. Downs 766,606

Valve mechanism, blowing engine, E. G. Rust 766,732

Valves in pipes, etc., means for connecting, R. A. Brooks 766,753

Vault, burial, J. W. Pettibone 766,283

Vehicle, J. E. Armstrong 766,445

Vehicle brake, M. J. Todd 766,744

Vehicle controlling mechanism, J. A. Char-ter 766,218

Vehicle gear, F. E. Wilcox 766,307

Vehicle motor, J. W. Moakler 766,191

Vehicle, motor, L. Bollee 766,414

Vehicle, motor, F. Patee 766,769

Vehicle running gear, W. Dieter 766,226

Vehicle, tip cart, C. Pay 766,518

Vehicle top members of plastic material or paper, means for producing, T. W. McFarland 766,462

Vehicle wheel, A. Turkington 766,297

Vehicle wheel, H. H. Taylor 766,780

Vending apparatus, O. Jeager 766,445

Vending machine, W. H. Pumphrey 766,728

Vending machine, coin controlled, G. W. MacKenzie 766,716

Vending machine, paper, I. A. Greenwood 766,441

Vessel closure, C. H. J. Dilg 766,604

Vessel handling, T. E. Crawford 766,671

Vessel safeguarding device, F. Schmitt 766,532

Violin bow guide, Strauss & Schwerdtle 766,549

Wagon jack, L. J. Grant 766,690

Wall lining, L. Patterson 766,726

Warping machine clock mechanism, A. E. Rhoades 766,383

A Sliding diagonal Shave—
The only scientific movement of the razor—is possible, and absolutely safe only with **The Curley Razor**. The one razor that will not let you scrape your face. Shaves the toughest beard from the tenderest skin without the slightest irritation. Price \$2.00 postpaid. Extra blades (interchangeable), 75 cents. Sold by responsible dealers.

The Curley IDEAL SAFETY RAZOR
Unconditionally Guaranteed. Shave with it once, twice or a dozen times. If not perfectly satisfied—if it is not the best razor you ever used, return it within 30 days. We will refund the price and destroy the razor. Book No. 9, containing instructions on shaving, free.

J. CURLEY & BROTHER, 6 Warren St., New York.

ENGINE & FOOT MACHINERY SHOP OUTFITS. LATHES TOOLS & SUPPLIES. SEBASTIAN LATHES CO. CINCINNATI, O.

Foot and Turret Lathes, Planers, Shapers, and Drill Presses SHEPARD LATHES CO., 133 W. 21 St., Cincinnati, O.

THE OBER LATHES For Turning Axe, Adze, Pick, Sledge, Hatchet, Hammer, Auger, File, Knife and Chisel Handles, Whiffletrees, Yokes, Spokes, Porch Spindles, Stair Busters Table and Chair Legs and other irregular work.

The Ober Mfg. Co., 10 Bell St., Chagrin Falls, O., U.S.A.

FRICITION DISK DRILL FOR LIGHT WORK.

Has These Great Advantages: The speed can be instantly changed from 0 to 1600 without stopping or shifting belts. Power applied can be graduated to drive, with equal safety, the smallest or largest drills within its range—a wonderful economy in time and great saving in drill breakage.

ELECTRICAL APPARATUS REPRESENTED BY CONVENTIONAL DIAGRAMS IN DRAWINGS.—Fifty diagrams showing the usual method of illustrating electrical apparatus in drawings. A labor saving paper. Contained in SUPPLEMENT 1106. Price 10 cents. For sale by Munn & Co. and all newsdealers.

SOMETHING NEW! Our Hand IGNITER needs no batteries to start your gasoline engine. A few turns of the handle produces a large spark. Purchase one of these igniters and save trouble and expense with batteries. We carry a full line of Magnets, Dynamos, etc. Write for catalog.

PALMER MARINE and STATIONARY MOTORS 2 and 4 CYCLE are no experiment, as they are in successful operation in all parts of the world. Launches in stock. Send for Catalogue.

For Either Hand or Power This machine is the regular hand machine supplied with a power base, pinion, countershaft, etc., and can be worked as an ordinary power machine or taken from its base for use as a hand machine. Length of pipe handled easily in small room. Illustrated catalogue—price list free on application.

Patents, Trade Marks, COPYRIGHTS, etc., Solicitors Address MUNN & CO., of Patents Office of the SCIENTIFIC AMERICAN 361 Broadway, New York. Branch Office, 625 F St., Washington, D. C. Hand-book Sent Free on Application.

Kerosene Oil Engine Nothing but Kerosene Oil to run it Simple, Safe and Efficient. Needs little attention, is less likely to get out of order, and is cheaper to run than any other engine manufactured. Economical and Easily Operated.

HAND BOOK OF Gasoline Automobiles THIS handsomely bound and artistically printed book now in the hands of the printers will contain 88 pages and will illustrate seventy-eight gasoline cars, one car and its specifications to each page. It is issued primarily for convenience and information to the prospective purchaser of an automobile. The products of the principal manufacturers throughout the United States of America and the importers of gasoline machines are shown by illustrations and specifications.

ELECTRIC LAUNCH MOTOR.—THE design in this paper is for a motor of unusual simplicity of construction, which can easily be built by an amateur at small cost. It is intended for a boat of about 24 feet or all and 4 feet 6 inches beam, drawing 18 inches, and is capable of propelling such craft at a speed of 7 miles per hour. Illustrated with 21 cuts. See SCIENTIFIC AMERICAN SUPPLEMENT, No. 1202. Price 10 cents by mail, from this office and from all newsdealers.

Electric Motor The Rienzo Motor runs at high speed when connected to one cell of almost any kind of battery. It rotates in either direction and is reversed without changing connections. It is fitted with grooved pulley. Price 50c. Postage and packing 15c. Motor outfit No. 8—consists of 1 Rienzo Motor; 1 Rheostat, or speed regulator; 2 Small Dry Batteries and 10 feet of wire. Price \$1. Postage and packing 30c. Send stamp for catalog.

MAXIMUM POWER—MINIMUM COST If you use a pump for beer, lard, acids, starch, petroleum, brewer's mash, tanner's liquor, cottonseed oil or fluids, hot or cold, thick or thin you want to get the TABER ROTARY PUMP which does the most work at the least expense. Simply constructed. Can be run at any desired speed. Perfectly skilled workman. Details guaranteed. Catalogue free.

The Franklin Dynamo Furnished in parts for amateurs to put together. Output of 5 amperes and 10 volts. Just the thing for experiments or practical use. Will drive sewing machine or small lathe, or light six 6-candle lamps. Rough castings, \$3.50; partly machined, \$6.00; parts all machined, ready to assemble and wind, \$8.50; Blue prints and directions with each set. Send for booklet No. 9.

HOW TO MAKE AN ELECTRICAL Furnace for Amateur's Use.—The utilization of 110 volt electric circuits for small furnace work. By N. Monroe Hopkins. This valuable article is accompanied by detailed working drawings on a large scale, and the furnace can be made by any amateur who is versed in the use of tools. This article is contained in SCIENTIFIC AMERICAN SUPPLEMENT, No. 1182. Price 10 cents. For sale by MUNN & CO., 361 Broadway, New York City, or by any bookseller or newsdealer.

If you want the best CHUCKS, buy Westcott's Little Giant Double Grip Drill Chucks, Little Giant Drill Chucks Improved, Little Giant Drill Chucks Cutting-off Chucks, Scroll Combination Lathe Chucks, Geared Combination Lathe Chucks, Plain Universal Lathe Chucks, Independent Lathe Chucks. Made by Westcott Chuck Co., Oneida, N. Y., U. S. A. Ask for catalogue in English, French, Spanish or German. FIRST PRIZE AT COLUMBIAN EXPOSITION, 1893.

THE EUREKA CLIP The most useful article ever invented for the purpose. Indispensable to Lawyers, Editors, Students, Bankers, Insurance Companies and business men generally. Book marker and paper clip. Does not mutilate the paper. Can be used repeatedly. In boxes of 100 for 25c. To be had of all booksellers, stationers and notion dealers, or by mail on receipt of price. Sample card, by mail, free. Manufactured by Consolidated Safety Pin Co., Box 124, Bloomfield, N. J.

IVY OR OAK POISONING immediately relieved and quickly cured by Hydrozone

Harmless, although a most powerful healing agent, will send on receipt of 10 cents to pay postage.

A TRIAL BOTTLE FREE. Send for it now. It will immediately relieve and promptly cure Insect Bites, Hives, Prickly Heat, Sunburn, etc.

Sold by leading druggists. None genuine without my signature.

Prof. Charles Marchand

Dept. U, 63 Prince St., New York. Send for Booklet on "How to treat diseases," containing hundreds of testimonials of wonderful cures.

CABOT'S

Sulpho-Naphthol

For Tender, Aching Feet

Relieves pain; reduces swelling; destroys odors; cures offensive perspiration. At all dealers. Look for Trade Mark. 10c. and 25c. packages by mail of...

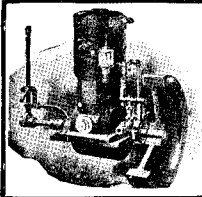
THE FINSEN LIGHT TREATMENT CURES ALL SKIN DISEASES AND CANCER

NO matter what skin disease you have it can be successfully treated by the FINSEN Light Treatment. Endorsed and endorsed by the rulers of four great nations. No operation, medicine or pain. WRITE today describing your case and get our 80-page book which describes the treatment fully. It is FREE.



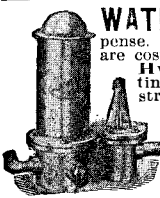
PROF. NIELS R. FINSEN.

The Finsen Light Institute of America Suite D 78 State Street, Chicago



There and Back WHAT A RELIEF

Write us to-day for information GRANT-FERRIS CO Troy, N. Y.



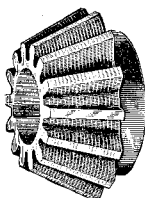
WATER A PERPETUAL SUPPLY usually means perpetual expense. The windmill and gasolene engine are costly to install and run. Niagara Hydraulic Ram will work continuously wherever there is a running stream. Nothing to blow down, blow up, or require attention. Requires less head of water to operate than any other ram. Never needs repairs. Catalogue free.

Niagara Hydraulic Engine Co., CHESTER, PA.

SENSITIVE LABORATORY BALANCE. By N. Monroe Hopkins. This "built-up" laboratory balance will weigh up to one pound and will turn with a quarter of a postage stamp. The balance can be made by any amateur skilled in the use of tools, and it will work as well as a \$125 balance. The article is accompanied by detailed working drawings showing various stages of the work. This article is contained in SCIENTIFIC AMERICAN SUPPLEMENT, No. 1184. Price 10 cents. For sale by MUNN & Co., 136 Broadway, New York City, or any bookseller or newsdealer.

Every Mechanic Should Own It.

Montgomery & Co.'s Tool Catalogue which is thoroughly up-to-date. 704 pages and discount sheet. Sent by mail for 25 cents. MONTGOMERY & CO., 105 Fulton St., New York City.



NOISELESS Bevel Pinions

We can furnish our New Process Noiseless Pinions in bevels as well as spurs of any size wanted and to transmit any required horse power. Write for catalogue.

THE NEW PROCESS RAWHIDE CO. Syracuse, N. Y.

150 Years' Experience PATENTS

Trade Marks, Designs, Copyrights, Etc.

Anyone sending a sketch and description may quickly ascertain our opinion free whether an invention is probably patentable. Communications strictly confidential. Handbook on Patents sent free. Oldest agency for securing patents. Patents taken through MUNN & Co. receive Special Notice, without charge, in the

Scientific American

A handsomely illustrated weekly. Largest circulation of any scientific journal. Term, \$3 a year; four months, \$1. Sold by all newsdealers MUNN & Co., 361 Broadway, New York Branch Office 635 F St. Washington, D. C.

Table listing various mechanical parts and their prices, including washing machines, watches, water meters, and various tools.

DESIGNS.

Table listing design services and prices, such as rug designs, spoons, and wire stretchers.

TRADE MARKS.

Table listing trade marks for various products like beer, clothing, and machinery, with associated prices.

LABELS

Table listing labels for products like cigars, ginger ale, and beverages, with prices.

PRINTS.

Table listing printing services and prices, such as mineral water labels and cement machinery.

A printed copy of the specification and drawing of any patent in the foregoing list, or any patent in print issued since 1863, will be furnished from this office for 10 cents, provided the name and number of the patent desired and the date be given. Address Munn & Co., 361 Broadway, New York.

Canadian patents may now be obtained by the inventors for any of the inventions named in the foregoing list. For terms and further particulars address Munn & Co., 361 Broadway, New York.

THE HARRINGTON & KING PERFORATING CO. PERFORATED METAL OF EVERY DESCRIPTION FOR ALL USES. 225 NO. UNION ST. CHICAGO, ILL.

SPECIAL MANUFACTURING. DIES AND STAMPINGS TO ORDER. SPECIAL MACHINERY—MODELS—EXPERIMENTAL WORK. DROP FORGING DIES AND DROP FORGINGS.

ICE MACHINES. Corliss Engines, Brewers' and Bottlers' Machinery. THE VILTER MFG. CO., 899 Clinton St., Milwaukee, Wis.

CHEMICAL EXAMINATIONS OF ALL KINDS. DR. H. C. STIEFEL, Bissell Block Pittsburgh, Pa.

MODELS & GEARS. CATALOGUES FREE. UNION MODEL WORKS & GEARS, 193 CLARK CHICAGO.

MODELS & EXPERIMENTAL WORK. Inventions developed. Special Machinery. E. V. BAILLARD, Fox Bldg., Franklin Square, New York.

THERMO-PILES \$3.00 each. For electrolytic assays, charging storage batteries, etc. Walsh's Sons & Co., Newark, N. J.

Experimental & Model Work. Ctr. & advice free. Wm. Gardam & Son, 45-51 Rose St., N. Y.

INVENTORS. We manufacture METAL-SPECIALTIES of all kinds, to order; largest equipment and lowest prices. Send sample or model for low estimate and best expert advice FREE. THE EAGLE TOOL CO. Dept. W, Cin'ti, O.

Dies, Tools and Special Machinery. Models and Experimental Work. General Machine Work. PH. J. BENDER & SONS, Inc., 87 Frankfort St., New York.

NOVELTIES & PATENTED ARTICLES. MANUFACTURED BY CONTRACT. PUNCHING DIES, SPECIAL MACHINERY. E. KONIGSLOW STAMPING & TOOL WORKS, CLEVELAND, O.

Models and Experimental Work. Inventions and Models designed and perfected. Years of success. Modern shop. M. P. Schell, 507 Mission St., San Francisco.

THE SCHWEDLER STAMP CO. STEEL STAMPS, LETTERS & FIGURES. BRIDGEPORT, CONN.

Magical Apparatus. Grand Book Catalogue Over 700 engravings 25c. Parlor Tricks Catalogue, free. MARTINKA & CO., Mfrs., 493 Sixth Ave., New York.

Are you interested in Patents, Model or Experimental work? Our booklet entitled

WHAT WE DO—HOW WE DO IT will be sent to you on request. KNICKERBOCKER MACHINE WORKS, Inc., 8-10-12 Jones Street, New York.

MASON'S NEW PAT. WHIP HOISTS save expense and liability incident to Elevators. Adopted by principal storehouses in New York & Boston. Manfd. by VOLNEY W. MASON & CO., Inc., Providence, R. I., U. S. A.

TYPEWRITERS. ALL MAKES. All the Standard machines SOLD or RENTED ANYWHERE AT HALF MANUFACTURERS' PRICES. Shipped with privilege of examination. Send for Cat. Typewriter Emporium, 203 LaSalle St., Chicago.

MATCH MACHINERY. BIG MONEY IN MATCHES. We manufacture everything pertaining to the business. The Very Latest Process. We will furnish a manager or teach any purchaser the business. F. W. MURPHY & BRO., 1118 Ashtland Block, Chicago, Ill., U. S. A.

ARTESIAN. Wells, Oil and Gas Wells drilled by contract to any depth from 50 to 3000 feet. We also manufacture and furnish everything required to drill and complete same. Portable Horse Power and Mounted Steam Drilling Machines for 100 to 1200 feet. Write us stating exactly what is required and send for illustrated catalogue. Address

PIERCE WELL ENGINEERING AND SUPPLY CO. 136 LIBERTY STREET, NEW YORK, U. S. A.

A. W. FABER

Manufactory Established 1761. LEAD PENCILS, COLORED PENCILS, SLATE PENCILS, WRITING SLATES, INKS, STATIONERS RUBBER GOODS, RULERS, ARTISTS' COLORS.

78 Reade Street, New York, N. Y. GRAND PRIZE, Highest Award, PARIS, 1900.

To Owners of Gasoline Engines, Automobiles, Launches, Etc. The Auto-Sparker does away entirely with all starting and running batteries, their annoyances and expense. No belt—no switch—no batteries. Can be attached to any engine now using batteries. Fully guaranteed; write for descriptive catalogue.

Motsinger Device Mfg. Co., 14 Main St., Pendleton, Ind.

78 Reade Street, New York, N. Y. GRAND PRIZE, Highest Award, PARIS, 1900.

To Owners of Gasoline Engines, Automobiles, Launches, Etc. The Auto-Sparker does away entirely with all starting and running batteries, their annoyances and expense. No belt—no switch—no batteries. Can be attached to any engine now using batteries. Fully guaranteed; write for descriptive catalogue.

Motsinger Device Mfg. Co., 14 Main St., Pendleton, Ind.

Motsinger Device Mfg. Co., 14 Main St., Pendleton, Ind.

IF YOU SHOOT A RIFLE, Pistol or Shotgun, you'll make a Bull's Eye by sending three 2c. stamps for the Ideal Hand-book "A" 126 pages FREE. The latest Encyclopedia of Arms, Powders, Shot and Bullets. Mention SCIENTIFIC AMERICAN. Address IDEAL MFG. CO., 26 U St., NEW HAVEN, CONN., U.S.A.

Universal SCRAPER

75 cents buys the best Scraper ever made. Try it on floors or meat blocks. Send for free catalog No. 17 B. THE L. S. STARRETT CO., Athol, Mass.

The NEW BRISTOL Counter

Registers an accurate account of work done on printing presses, grain tallies, weighing, measuring and other automatic machines. Counts up to 1,000,000 and repeats automatically. Simple, accurate, durable. Special counters to order. Send for circular. C. J. ROOT, Bristol, Conn.

Angle Benders

We make hand-power benders for forming angles in stock 1 in. thick and under. Light stock can be bent cold. WALLACE SUPPLY COMPANY 910 Royal Insurance Building, CHICAGO

ROTARY PUMPS AND ENGINES.

Their Origin and Development.—An important series of papers giving a historical resume of the rotary pump and engine from 1688 and illustrated with clear drawings showing the construction of various forms of pumps and engines. 38 illustrations. Contained in SUPPLEMENTS 1149, 1148, 1147, 1146. Price 10 cents each. For sale by Munn & Co. and all newsdealers.

IF YOU NEED A GOOD OILSTONE

Try an INDIA. Guaranteed to give satisfaction or money returned. THE PIKE MFG. CO. - PIKE, N. H. New York Store, 151 Chambers Street

WORLD'S FAIR ROOMS FOR 75,000 REFINED PERSONS 50 CENTS TO \$2.50

One person in room, for \$1. in the homes of St. Louis. Reservations made by mail for dollar fee returned if room occupied week or more. References: Fair officials, bankers, merchants and educators. World's Fair Rooming Bureau, Olive Street and Thirteenth Street, St. Louis. Agents wanted. W. A. CARPENTER, Late Local Secretary, National Educational Association.

NIAGARA FALLS

"Pillar'd around by everlasting hills, Robed in the drapery of descending floods."

NEW YORK CENTRAL LINES

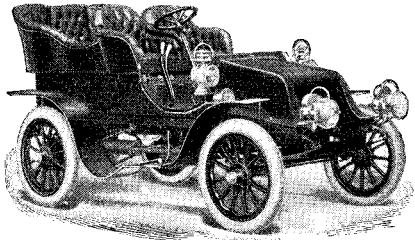
One of the natural wonders of the world. A charming place at any season of the year, reached from every direction by the

A visit to the Falls is an object lesson in Geography; an exhibition of landscapes that no painter can equal, and a glimpse of the latest developments of the industrial world.

A copy of Four-Track Series No. 9, "Two Days at Niagara Falls," will be sent free, upon receipt of a two-cent stamp, by George H. Daniels, General Passenger Agent, Grand Central Station, New York.

THE IDEAL SIGHT RESTORER. RESTORES THE SIGHT WEAK EYES MADE STRONG. SPECTACLES ARE A NUISANCE. NECESSITY ONLY MAKES ONE WEAR THEM. PREVENTS FAILING SIGHT DULL EYES MADE BRIGHT. Write for ILLUSTRATED TREATISE ON THE EYE, Mailed Free. THE IDEAL COMPANY, 239 BROADWAY, NEW YORK.

WINTON

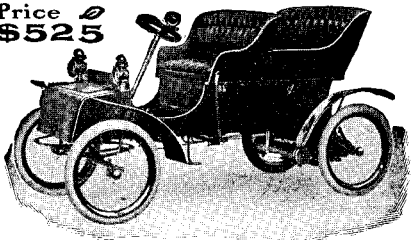


Absolute air governor, guaranteed tires, indestructible crank-shaft, mechanically correct transmission, thoroughly reliable ignition. Completely equipped, \$2,500 f. o. b. Cleveland; without top, \$2,300. Prompt deliveries.

THE WINTON MOTOR CARRIAGE CO., Cleveland, O., U.S.A.

Orient Tonneau Car

Price \$525

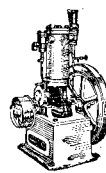


Speed twenty miles per hour. Will climb all ordinary grades. The best car for the price in the world.

Write for catalogue

WALTHAM MANUFACTURING CO. Waltham, Mass.

CHARTER



GAS and GASOLINE For All Work. Stationaries, Portables, Hoisters, Pumps, Sawing & Boat Outfits. Send for Catalogue and Testimonials. State Your Power Needs.

CHARTER GAS ENGINE CO., Box 148, STERLING, ILL.

What Is Daus' Tip-Top?

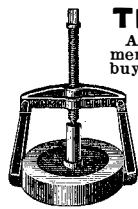


TO PROVE that Daus' "Tip-Top" is the best and simplest device for making 100 copies from pen-written and 50 copies from typewritten original, we will ship complete duplicator, cap size, without deposit, on ten (10) days' trial. Price \$7.50 less trade discount of 33 1/2 per cent, or **\$5 Net**

The Felix A. B. Daus Duplicator Co., Daus Bldg., 111 John St., New York

Scales

All varieties at lowest prices. Best Railroad Track and Wagon or Stock Scales made. Also 1000 useful articles, including Saws, Sewing Machines, Bicycles, Tools, etc. save Money. Lists Free. CHICAGO SCALE CO., Chicago, Ill.



THE CRANE PULLER

A deliberate acceptance of this implement upon our word, will reward the buyer with a NEW tool designed for drawing of cams, wheels, pulleys, etc., and forcing on or off sleeves, couplings and the like. No. 3.—For use in machine shops and automobile repair shops, capacity, 10 tons. No. 2.—For automobile kits, capacity, 6 tons.

CRANE & RICHARDSON, 113 Water Street, Boston, Mass.

Microscopes

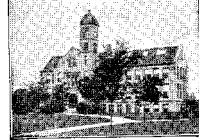
Our Microscopes, Microtomes, Laboratory Glassware, Chemical Apparatus, Chemicals, Photo Lenses and Shutters, Field Glasses, Projection Apparatus, Photo-Micro Cameras are used by the leading Laboratories and Government Departments Round the World.

Catalogs free.

BAUSCH & LOMB OPT. CO. ROCHESTER, N. Y.

HOROLOGICAL DEPARTMENT BRADLEY POLYTECHNIC INSTITUTE

Formerly Parsons Horological Institute



PEORIA, ILLINOIS

LARGEST and BEST WATCH SCHOOL in AMERICA

We teach Watch Work, Jewelry, Engraving, Clock Work, Optics. Tuition reasonable. Board and rooms near school at moderate rates. Send for Catalog of Information.

CRUDE ASBESTOS DIRECT FROM MINES

PREPARED ASBESTOS FIBRE for Manufacturers use

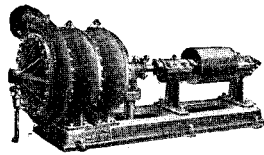
R. H. MARTIN, OFFICE, ST. PAUL BUILDING 220 B'way, New York.



A TELEPHONE Guaranteed

For 600 feet, - each \$2.75
For three miles, - " 4.25
For ten miles, - " 6.25
For farmers' long lines, 10.50
Farr Telephone and Const. Supply Co. Dept. A, 119 W. Jackson Blvd., Chicago

JESSOP STEEL CO. MFRS OF CRUCIBLE SHEET STEEL WASHINGTON, PA.



WONDER of the AGE

Jackson's Patent High Head Centrifugal Pump. Guaranteed to raise water 1,000 feet or more and maintain an efficiency of from 70% to 84%. First choice of the Engineer for City Water Works, Draining Mines, Hydro-rauling, Irrigating and Reclaiming Land. **Beats the world for Durability, Economy and Efficiency.** Catalogue No. 6.

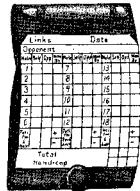
BYRON JACKSON MACHINE WORKS, - - SAN FRANCISCO, CAL.

ACCURATE RELIABLE DURABLE

New England
WATCHES

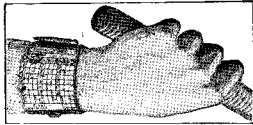
STYLISH @ EFFECTIVE IN DESIGN

We know that our watches will do what we expect of them, therefore, it is easy to unquestionably guarantee every watch we make, from the cheapest to the most expensive grade. THE NEW ENGLAND WATCH CO., 37 @ 39 Maiden Lane, New York 7 Snow Hill, London, England

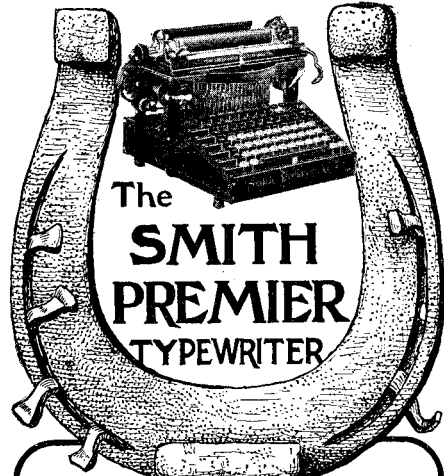


At Last the Game of Golf

enjoys the peculiar privilege of being perfection. THE "MISSING LINK" - OF THE LINKS found in the "Ideal" Scoring Device. Always keeps the score in sight. Weightless. Accurate. Adjustable to any wrist. A transparent cover protects the sheet from soil. Openings permit scoring with convenience and despatch. Lift the button and a fresh sheet is instantly exposed. Made from fine tan Russia. Device mailed for Fifty Cents.



W. H. WEISSBROD, - Greenfield, Mass.



The **SMITH PREMIER** TYPEWRITER

BRINGS GOOD FORTUNE TO ITS USERS

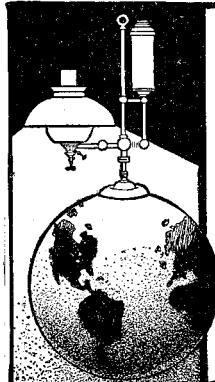
HOME OFFICE AND FACTORY SYRACUSE, N. Y.

EXHIBIT AT WORLDS FAIR, ST. LOUIS, SEC. 23. PALACE LIBERAL ARTS.

Our Weekly Market Letter

written with conciseness and authority, deals with the matters of the hour, pertaining to Stock and Bond Investments. Upon request, your name goes on our mailing list.

Corey, Milliken & Co. BANKERS AND BROKERS 15 State Street, Boston, Mass.

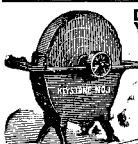


The "Best"

The World's Best Light Sold in every civilized country on earth. Costs less than kerosene, gives six times more light than electricity.

A Pure White Steady Light Makes and burns its own gas. No wick, no odor, no smoke. Absolutely safe. For indoor and outdoor use.

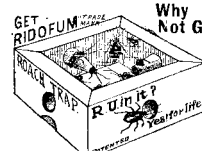
Agents Wanted, Exclusive territory, liberal commissions. Catalog free. THE BEST LIGHT CO. Owners of Original Patents. 87 E. 5th St. CANTON, OHIO.



DO YOU USE GRINDSTONES?

If so we can supply you. All sizes mounted and unmounted, always kept in stock. Remember, we make a specialty of selecting stones for all special purposes. Ask for catalogue.

The CLEVELAND STONE CO. 2d Floor, Wilshire, Cleveland, O.



Why Not Get "RIDOFUM"

We mean roaches and water-bugs. It is easy, if you use a "RIDOFUM Roach Trap." Send for descriptive circular, or, better still, 25 cents for sample trap, postpaid. Liberal terms to agents.

BENNETT PAPER BOX COMPANY 46 Harrison Avenue, Springfield, Mass.

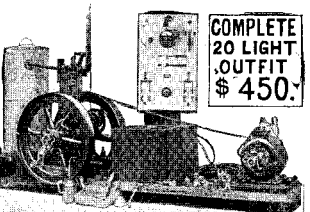


are built on lines of strict originality and are protected by the Olds patents. No engine made approaches the Olds for economy and durability. Stationary Engines, 2 to 100 h. p. Portable Engines, 8 to 18 h. p. Write to-day for full information and new illustrated catalog. Olds Gasoline Engine Works 216 River St., Lansing, Mich.



PERFECTED GRANITE ROOFING

EASTERN GRANITE ROOFING CO. Irving Building New York



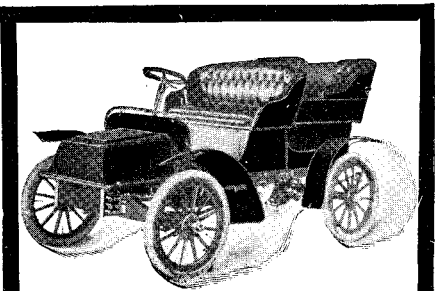
YOUR OWN ELECTRIC LIGHTS

Any size place, summer homes, launches, yachts, etc. Every detail included; very best material; practical. So simple no electrician required. Light All the Time, as storage battery included. Gas, Gasoline or Steam engines used give plenty of power for pumping water, sawing wood, refrigeration, etc. For printed matter address

ELECTRIC DEPARTMENT RICHARDSON ENGINEERING CO., Hartford, Conn.

DOING BUSINESS IN CANADA?

Why Not Establish a Branch Factory There? A good opportunity is open in the manufacturing city of Brantford, Ontario, where a fine factory is for sale, or to rent. It is located on a large lot, and includes three good brick buildings and fireproof storehouse. Main building 115 feet by 55 feet, three storeys high, with good 180 H. P. engine and boiler. Available for present use. Will be in market only a short time. Apply to P. O. Box 49, Brantford, Ont.



An 8 1/4 horse-power Cadillac motor, when tested after nine months of continuous service, developed 10 1/4 horse-power. Does that kind of broken promise interest you?

It isn't always possible to be exactly truthful, but there is a right way to err. You'll find some remarkable statements in the Cadillac literature, but if there's anything that isn't so, the difference is in your favor. We'll send you booklet N if you'll ask for it, and tell you where the nearest agency is. A ride in the Cadillac will be the more a revelation if you're familiar with other cars. Cadillacs are \$750 to \$900.

CADILLAC AUTOMOBILE CO., Detroit, Mich. Member Association of Licensed Automobile Manufacturers.



Do You know there is a pencil just made for your use? **Dixon's Guide For Pencil Users** A 32-page book, indexed by vocations gets you in touch with just the right pencil—it's free. Department W JOSEPH DIXON CRUCIBLE CO. Jersey City, N. J.

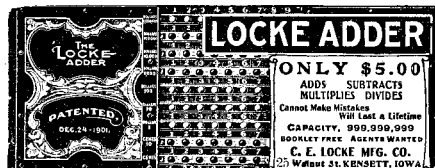
Historic Boston Souvenir Knives

Two-blade pocket knife, 60c. Artistic reproduction on aluminum handle of famous historic spots of Boston. Also single-blade knife, watch-guard size, 30c. Mailed to any address on receipt of price. BURDITT & WILLIAMS CO. - Boston, Mass. Proprietors of the "Hardware Store for a Hundred Years."

Mosquitoes

JAPSTICK is a new aromatic pastille, which is guaranteed to drive away mosquitoes. Each stick burns an hour. Cures mosquitoes of the biting habit. Sent postpaid for Twenty-five Cents per box.

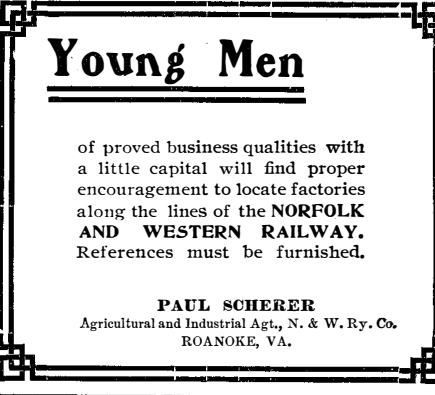
THE CULECID CO. 165 Summer St., - Boston Mass.



See Our Exhibit in Liberal Arts Building, St. Louis Exposition.

Volt Ammeters

Pocket size, but large enough for accuracy and practical use. Various ranges for testing batteries, electric light, telephone and other circuits, etc. Also, Voltmeters and Ammeters for general measurements. Send for Circular. L. M. PINOLET, 80 Cortlandt St., New York, N. Y.



Young Men of proved business qualities with a little capital will find proper encouragement to locate factories along the lines of the NORFOLK AND WESTERN RAILWAY. References must be furnished. PAUL SCHERER Agricultural and Industrial Agt., N. & W. Ry. Co. ROANOKE, VA.



15 to 21 Clinton Street.

"LIGHTWEIGHT" PRESIDENT SUSPENDERS

mean freedom in breathing. Weigh 2 oz. Any store 50c and \$1.00 postpaid for choicest patterns. THE C. A. EDGARTON MFG. CO., Box 310, Shirley, Mass.